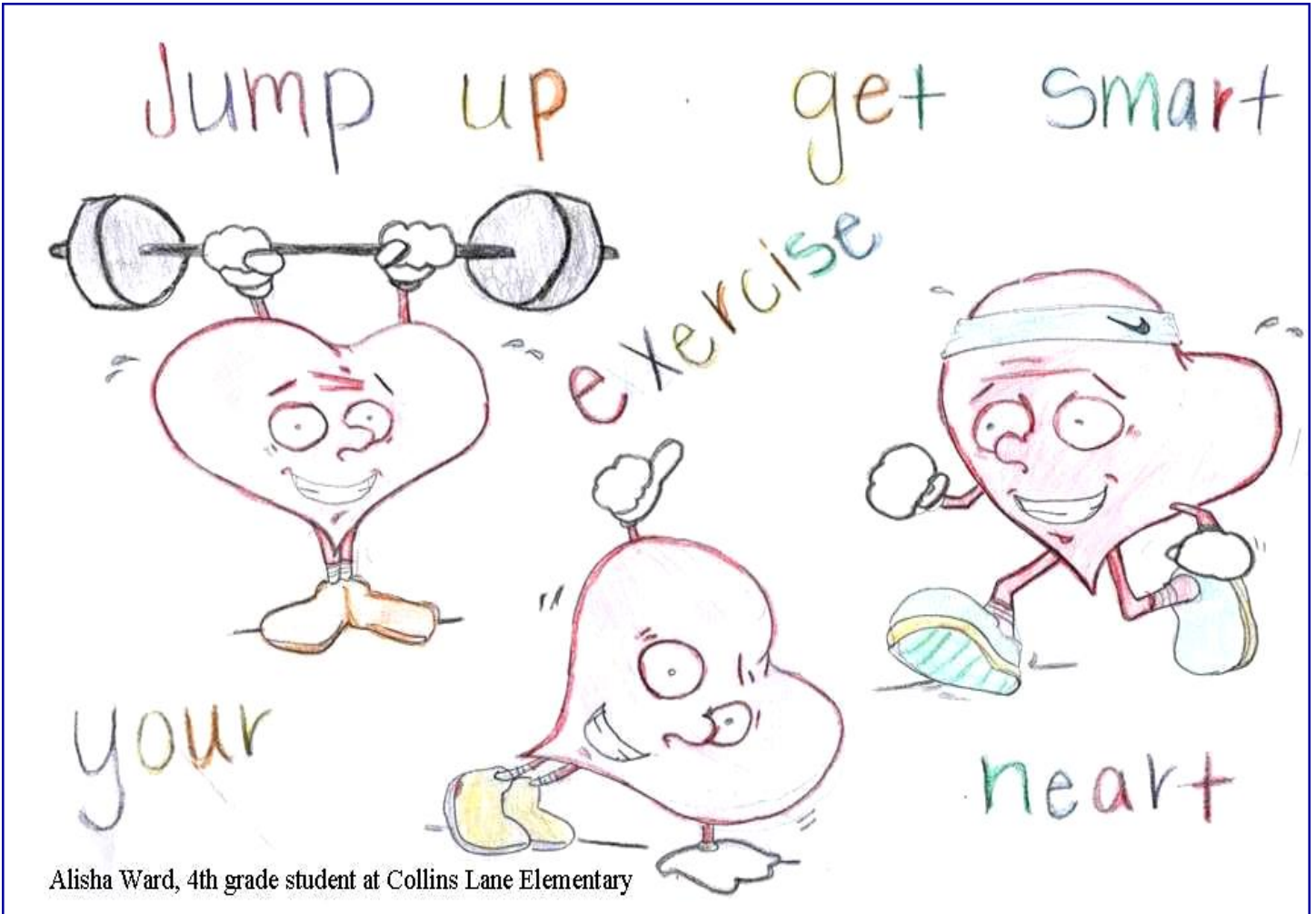


Annual Report

2008/2009



Franklin County Health Department
WWW.FCHD.ORG



Public Health
Prevent. Promote. Protect.



Franklin County Health Department

Public Health
Prevent. Promote. Protect.

BUSINESS OFFICE

Dear Franklin County Friends and Neighbors:

This Annual Report from the Franklin County Health Department (FCHD) has been published to update you on our many mutual achievements over the just completed Fiscal Year 2009. The report includes a glimpse of our goals for Fiscal Year 2010 so that we can continue to chip away at the “challenges” and build upon our successes. We are all public health beneficiaries and consumers. I therefore ask that you take several minutes to read this report and then share your ideas on how we all can collectively and more effectively work together to improve Franklin County’s public health system.

The health department is one part of this amazing, complex system, which also includes our public and private schools and local university, merchants, the faith-based community, transportation, public protection agencies, social services, governmental entities, parks and recreation, hospitals and other health care providers, and many more, including you. In keeping with the public health mandates of “Assurance, Assessment and Policy Development”, FCHD is committed to ongoing efforts to strengthen Franklin County’s public health system.

One of the best measurements of how we are doing is attention to the nationally agreed upon “Ten Essential Services of Public Health” (see page 5). As we progress into Fiscal Year 2010 and beyond, you may expect to hear much more about these Ten Essential Services and our move to public health accreditation. We serve you from our three campus sites: the Clinic/Business Office at 100 Glenn’s Creek Road, Home Health at 231 East Main Street, and at the Public Health Center, 851 East-West Connector.

As you will see in this report, our major health challenges continue to include heart disease and cancer. Many of these conditions could be greatly reduced by a greater group and individual focus on health risk behaviors, such as smoking cessation and prevention, elimination of second hand smoke, healthier nutrition and increased physical activity. (See our Community Health Profile on pages 14-15, for 2004 and 2005 data, the most recent available from the state Department for Public Health.)

I cannot emphasize it enough: we are all part of Franklin County’s public health system. You have directly and/or indirectly visited with FCHD, whether through visits to our Clinic or by Home Health services, or by information provided through our Health Education Department, or by purchase of food products or through other means. Perhaps you brought a pet to one of our “Rabies Clinics” with our veterinarian partners or maybe you sought us out for your annual flu shot. Please continue to be an active partner and let us know how we can serve you better, by calling any of our departments or visiting our website, www.fchd.org.

In service to a healthier Franklin County,

Charles P. Bradshaw, DMD
Chairman, Franklin County Board of Health



Dr. Bradshaw



Clinic Services
Business Office



Franklin County Home
Health Agency



Public Health Center
Environmental Services
Community Health
Education
Emergency Preparedness

About Us

Our Vision

We are a dynamic and progressive organization that proudly serves the diverse community needs with compassion and high quality services. We will continue to evolve and strive to serve customers in an efficient, effective manner that promotes trust and leadership.

Our Mission

Provide high quality compassionate and cost effective services to promote and preserve the health, well-being and safety of our community.

Our Core Values

Competent
Accessible
Progressive
Professional
Trustworthy
Compassionate
Knowledgeable

Awards

Fred Goins Spirit Award

This award is given each year to a staff member who has shown outstanding dedication to public health, the community and FCHD. The person chosen exemplifies spirit by showing enthusiasm, positive attitude, loyalty and a strong sense of caring.



Anita Johnson, RN
Fred Goins Spirit Award

Peggy S. Kidd Nutrition Award

This award is given by the Kentucky Public Health Association to honor a nutritionist for outstanding professional contributions and service in public health. The chosen person demonstrates cooperation with other agencies/groups, advocates and promotes legislation, helps to expand the field of public health nutrition and demonstrates effective and efficient use of organizational skills.



Debbie Y. Bell, RD, LD, CDE
Peggy S. Kidd Nutrition Award

Advisory Committees

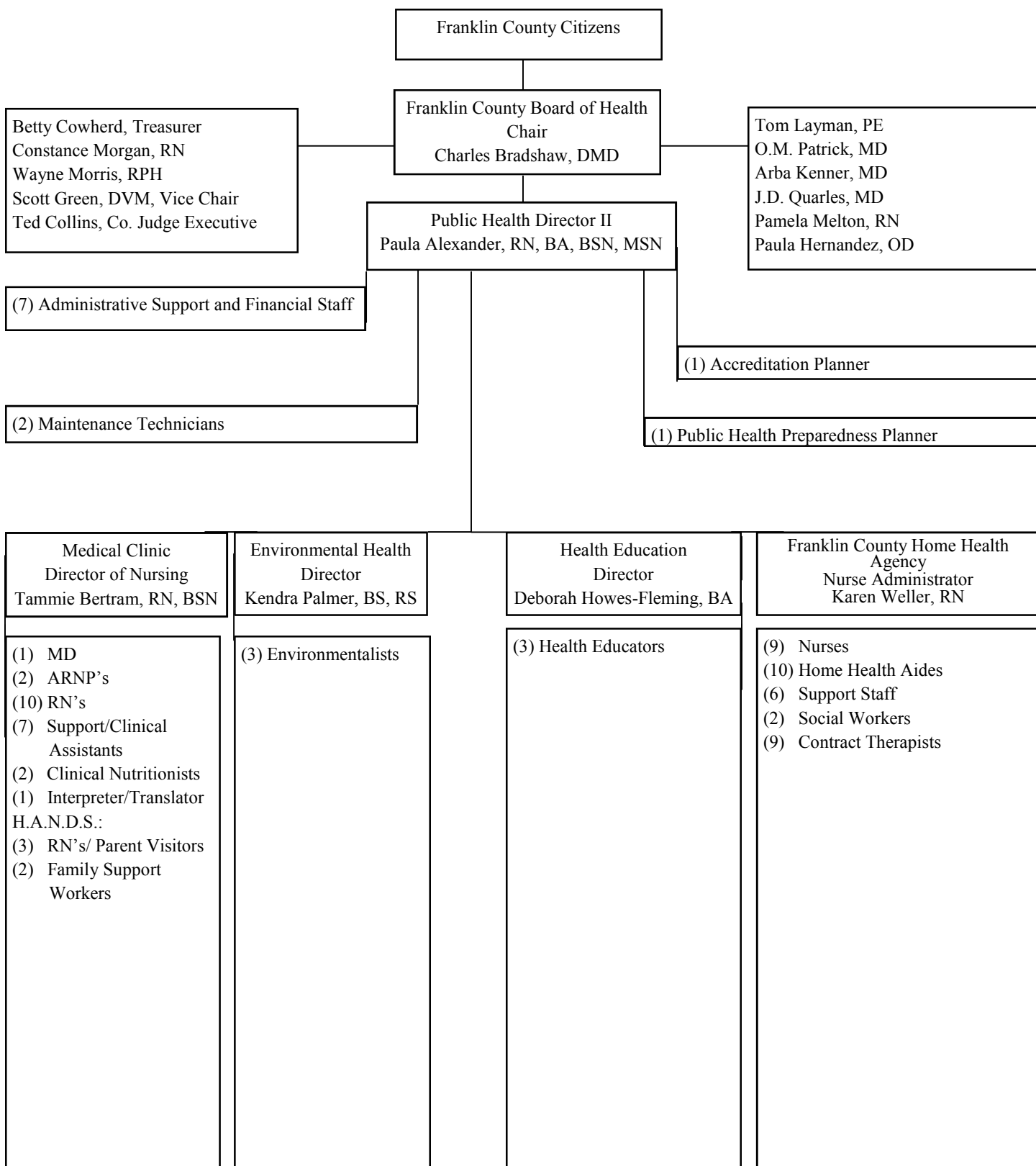
Clinic and Community Health Education

| | |
|------------------|---------------------|
| Pat Bacon | Lori Ivy |
| Joe Bell, MD | Alice Martinson |
| Mac Bray | Virginia Morris |
| Cathy Cooke | Jeffery Poe |
| Betty Cowherd | June Robinson, PhD |
| Patty Crittenden | Rochelle Silvernail |
| Glenna Hughes | Mark Wainwright, MD |
| | Deborah Wigginton |

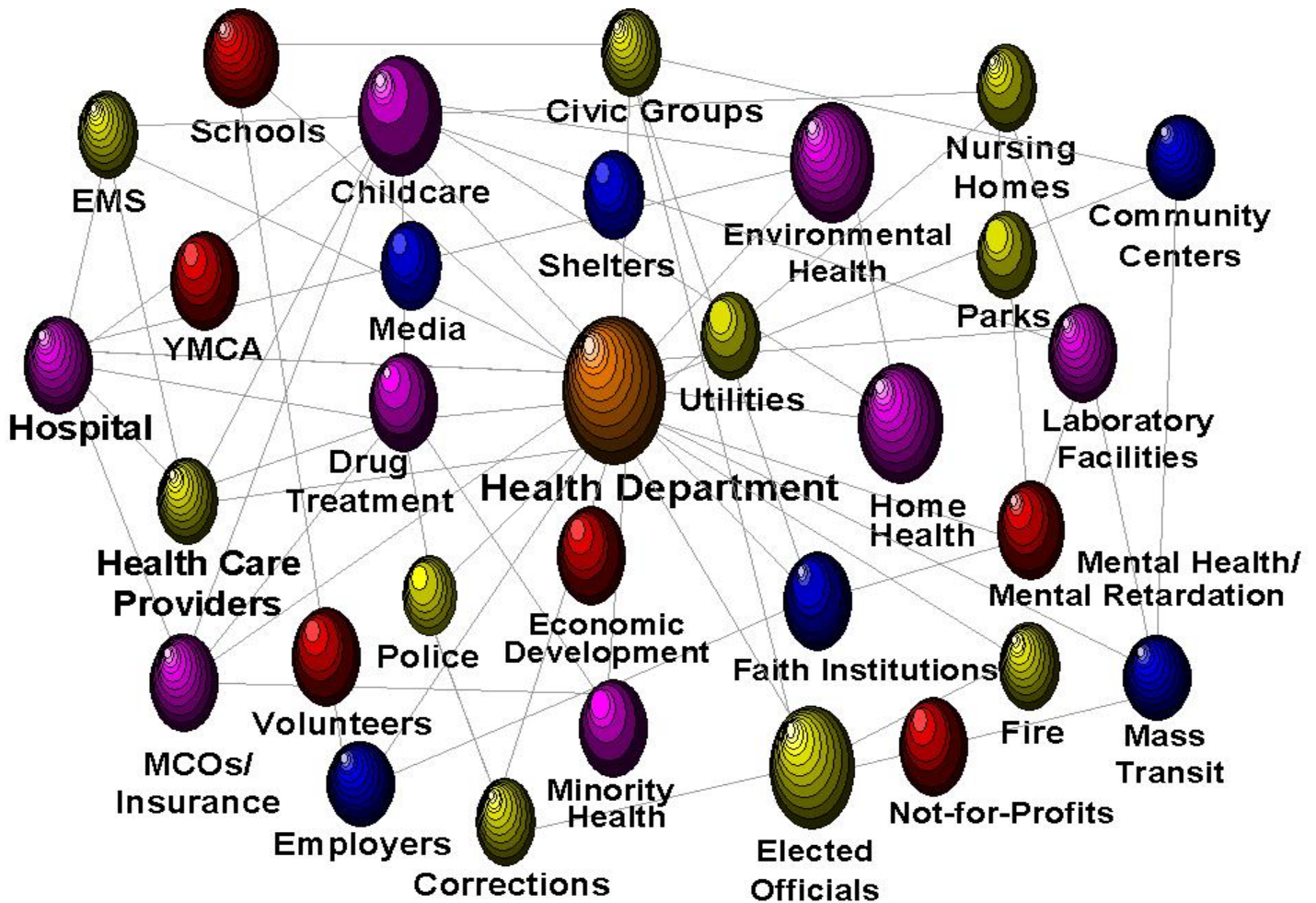
Home Health

| | |
|---------------------|---------------------|
| Kathy Carter | Bryan Shouse, MD |
| Rev. Stephen Flynn | Don Sturgeon |
| Priscilla Hazelett | Elizabeth Watts, RN |
| Paula Rutledge | Lisa Wiard, RN |
| Vicki Sebastian, RN | |

FCHD Organization Chart



Public Health System



Ten Essential Public Health Services

1. Monitor health status to identify and solve community health problems.
2. Diagnose and investigate health problems and health hazards in the community.
3. Inform, educate, and empower people about health issues.
4. Mobilize community partnerships to identify and solve health problems.
5. Develop policies and plans that support individual and community health efforts.
6. Enforce laws and regulations that protect health and ensure safety.
7. Link people to needed personal health services and assure the provision of health care when otherwise unavailable.
8. Assure a competent public health care workforce.
9. Evaluate effectiveness, accessibility and quality of personal and population-based health services.
10. Research for new insights and innovative solutions to health problems.

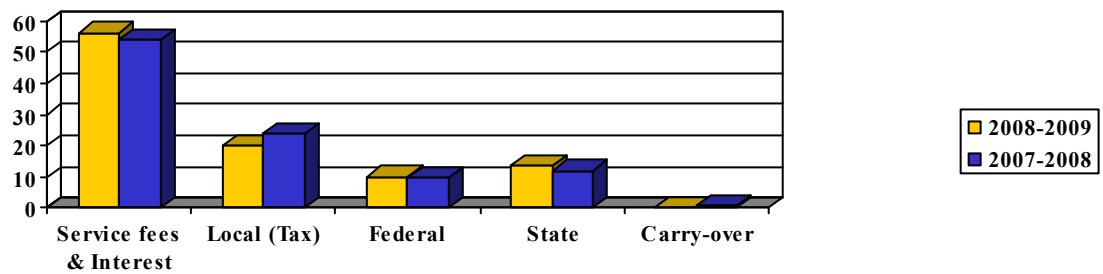
“Promote physical and mental health and prevent disease, injury and disability.”

-Public Health in America Mission

Revenue Sources

| Sources | 2008-2009 | Percent | 2007-2008 | Percent |
|-------------------------|--------------------|-------------|--------------------|-------------|
| Service fees & Interest | \$3,360,322 | 56.2% | \$2,809,792 | 54% |
| Local (tax) | \$1,200,433 | 20.1% | \$1,234,779 | 24% |
| Federal | \$612,245 | 10.2% | \$502,373 | 10% |
| State | \$807,155 | 13.5% | \$630,310 | 12% |
| Carry-over & Reserve | \$0 | 0.0% | \$13,576 | <1% |
| Total | \$5,980,155 | 100% | \$5,190,830 | 100% |

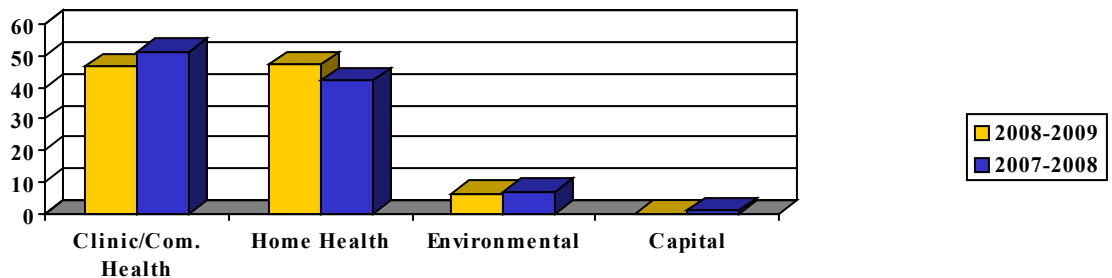
2008-2009 VS. 2007-2008 Revenue Sources



Revenue Allocations

| Allocations | 2008-2009 | Percent | 2007-2008 | Percent |
|-------------------------|--------------------|-------------|--------------------|-------------|
| Clinic/Community Health | \$2,561,298 | 46.4% | \$2,517,959 | 51% |
| Home Health | \$2,597,989 | 47.0% | \$2,105,687 | 42% |
| Environmental Health | \$365,644 | 6.6% | \$329,863 | 7% |
| Capital | \$0 | 0.0% | \$21,715 | <1% |
| Total | \$5,524,931 | 100% | \$4,975,154 | 100% |

2008-2009 VS. 2007-2008 Revenue Allocations



Mobilizing for Action through Planning and Partnerships

After fulfilling our Fiscal Year 2009 commitment to complete the National Public Health Performance Standards Program (NPHPSP) we have continued with our momentum and goal of quality improvement by beginning the Mobilizing for Action through Planning and Partnerships (MAPP) process. We have already made much progress, but this will be a continuing effort to help assure an ever-improving county.

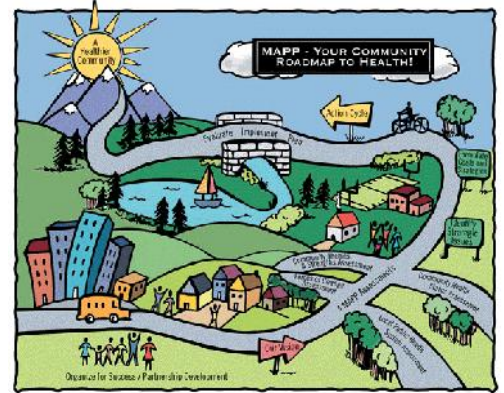
MAPP is a community-wide strategic planning tool for improving public health that is made possible through a cooperative agreement with the Centers for Disease Control and Prevention, the Public Health Practice Program Office and the National Association of County and City Health Officials. The national vision for MAPP is “measurable improvement in the community’s health and quality of life; increased visibility of public health within the community; community advocates for public health and the local public health system; ability to effectively anticipate and manage change; and stronger public health infrastructure, partnerships and leadership.”

The health department is only one of many partners engaging in Franklin County’s MAPP process. Other partners include but are not limited to Bluegrass Prevention, Coalition for a Smoke Free Franklin County,

Community Members, Community Trust Bank, Comp Care, Farmer’s Bank, Fiscal Court, Forever Communications, Frankfort Area Chamber of Commerce, Frankfort Emergency Management, Frankfort Fire and EMS, Frankfort-Franklin County Ministerial Association, Frankfort Independent Schools, Frankfort Parks, Frankfort Police Department, Frankfort Regional Medical Center, Frankfort Sewer, Frankfort YMCA, Franklin County Board of Health, Franklin County Detention Center, Franklin County Diabetes Coalition, Inc., Franklin County Drug Court, Franklin County Fire Department, Franklin County Public Schools, Franklin County Red Cross, Franklin County United Way, Franklin County Women’s Shelter, Greenheck, Health Works, Hospice of the Bluegrass, Internal Medicine Associates, Kentucky Department for Public Health, Kentucky State University, KY Fusion Center, Paul Sawyer Public Library, State Journal and Stewart Home School.

There are six phases in the MAPP Journey: 1 – Organizing for Success and Partnership Development, 2– Visioning, 3– Four MAPP Assessments (NPHPSP, Community Themes & Strengths Assessment, Forces of Change Assessment and Community Health Status Assessment), 4– Identify Strategic Issues, 5– Formulate Goals and Strategies and 6– Action

(Planning, Implementation and Evaluation). We continually revisit phase 1, Organizing for Success and Partnership Development and would therefore welcome your participation in MAPP. Our MAPP Committee has developed the vision that, “Franklin County will be



a healthy, safe, nurturing, respectful and welcoming community where all may thrive and enjoy wellness.” We are currently in phase 3 of MAPP and have the Community Themes & Strengths Assessment and the Community Health Status Assessment to complete. Please continue to support Franklin County’s public health system with your involvement and feedback.

Public Health Preparedness

Activities for Fiscal Year 2009 have not only focused on developing preparedness plans but also responding to emergency situations that impacted our community and state.

During this period, additional plans have been made to receive delivery of the Strategic National Stockpiles (SNS) if a Health Emergency is declared. One of the strategies is to conduct drive thru clinics in order to provide medications to the community. A major exercise of the plan was conducted in October by utilizing two outbound traffic lanes of Mero Street to provide flu vaccinations. Partners from the Frankfort Police Department, Franklin County Emergency Management, Kentucky Transportation Cabinet, Frankfort Street Department, American Red Cross and Franklin County Health Department (FCHD) staff participated in this event. The exercise tested our capacity to



Mero Street Drive Thru Flu Clinic

manage a large scale Point of Dispensing operation and it went extremely well with over 300 citizens receiving their flu vaccinations.

In January the entire state was hit with a severe ice storm that knocked out power and made many roads impassable. A State and Federal emergency was declared in 102 of Kentucky’s counties including Franklin County. FCHD responded by staffing the Red Cross Shelter and the Emergency Operations Center. Later in the Emergency, FCHD staff was assigned to emergency duties in other counties in western Kentucky.

The Novel H1N1 (Swine Influenza) virus outbreak was reported to the Centers for Disease Control and Prevention in late April 2009. FCHD personnel began surveillance and community education activities to prepare the citizens if a case

was reported in Franklin County. Medical Providers, Pharmacists, School Administrators, Emergency Medical Services, Hospital Staff and Emergency Managers were briefed concerning the disease outbreak. Public information about H1N1 was posted on the department’s website (www.fchd.org) to inform the community with timely and accurate information. In a response to the outbreak, personal protective equipment (PPE) was received from the SNS program to be distributed to healthcare workers. The Pandemic Influenza Plan is being reviewed and updated to address additional outbreaks of the H1N1 virus. This plan will ensure that the response agencies in Franklin County are prepared for a major health emergency.

In the upcoming year FCHD Preparedness Staff will continue to build the Department’s capacity to respond to any threat that would affect the health and safety of Franklin County citizens.

Clinic Services

WIC

Did you know that in 1974 the first WIC (Women, Infants and Children) special supplemental food program officially began here in Kentucky? WIC is a short-term nutrition program designed to assist families in need and influence lifetime nutrition. WIC targets high risk populations both from nutritional risk and socioeconomic risk.

More than 30 years later the WIC program continues to provide nutritious foods and nutrition education to families all over Kentucky and the US. WIC's success is due to a combination of nutrition education, nutritious foods, breastfeeding support and providing health care guidance and access to good health. The recent concern with childhood obesity and other childhood nutritional issues has prompted new changes in the WIC program.

Some of the new changes include:

- Infants do not get solid foods until 6 months as compared to 4 months before, but now in addition to cereal they also receive baby food. Fruits and vegetables are provided for formula fed infants and for breastfed infants meat is also provided.

- Women and children may receive whole grain breads, tortillas or rice; in addition they receive cash vouchers for fresh fruits and vegetables as part of their supplemental package.
- Whole milk is given to 1-2 year olds, but after age 2 only 2% or less is given.
- Canned beans have been added in addition to dry beans.

The nutritional risk has had some changes and the education has of course been updated, but the program continues to be successful. Some of the outcomes the WIC program has accomplished include:

- WIC reduces low birth weight rates and increases the duration of pregnancy
- Reduces fetal deaths and infant mortality
- Improves the growth of nutritionally at risk infants and children
- Decreases the incidence of iron deficiency anemia in children
- Improves the dietary intake of pregnant and postpartum women and

improves weight gain in pregnant women

- Pregnant women participating in WIC receive prenatal care earlier



- Children enrolled in WIC are more likely to have a regular source of medical care and have more up to date immunizations
- Helps get children ready to start school: children who receive WIC benefits demonstrate improved intellectual development
- Significantly improves children's diets.

(<http://chfs.ky.gov/dph/mch/ns/wic.htm>)

Mission Statement:
To provide the opportunity for our community to be healthy through quality care given by a knowledgeable and compassionate staff.

EPSDT

EPSDT stands for Early, Periodic, Screening, Diagnosis and Treatment. This is a comprehensive preventive child health program through Medicaid for children and adolescents under the age of 21. As a part of the program the health department strives to seek out eligible persons and inform them of the benefits of prevention and health resources available to them as Medicaid recipients. It also enables the primary care physician to assess the child's health needs through initial and periodic examinations and evaluations. In addition, it also assures that health problems found are diagnosed and treated early, before they become

more complex and their treatment more costly.

Services that are available include periodic screening of vision, dental evaluations and treatment and hearing services. Appropriate immunizations are given at the periodic visits along with laboratory screening, vision screening with referrals as needed and health education to parents and children. Health education is a required component of screening services and includes anticipatory guidance. Children should receive health check-ups regularly or before the following ages: 1 month; 2 months; 4 months; 6 months/ 9

months; 12 months; 15 months; 18 months; 24 months; 3 years; 4 years; 5 years; 6 years; 8 years; and once a year for ages 10-20.

At the Franklin County Health Department the doctor, ARNP or RN may perform the well child exam, screening, health education and anticipatory guidance in addition to administering the immunizations as needed. Over 14,500 pediatric services are performed each year by providers of the Franklin County Health Department.

Home Health Services



Leslie Slone, RN with Logan Hendershot



Debi Henry, RN with Katherine Smith



Jennifer Sheets, CSW with Nancy McCarty

Citizens of the community who envisioned the value of a county home care agency established our agency in 1977 as a grass roots effort. Today we are the largest and the only non-profit agency in Franklin County, employing over 30 full-time, part time and contract employees.

Our highly skilled staff provides skilled nursing and physical, occupational and speech therapy. We also have home health aides to provide personal care and social workers to help with issues such as long-term planning, financial crisis, emotional counseling and placement issues.

Waiver services that include homemaking, personal care and respite services are available to patients who qualify for the Home and Community Based Waiver (HCBW) program.

We accept patients who have Medicare, Medicaid, and most private insurances. We also accept patients who do not have a payer source if they have a skilled need.

To qualify for home health services, Medicare patients must be homebound. This means visits outside the home are infrequent and of short duration. All patients must have a physician who is willing to provide oversight for our services and the patient's need must be intermittent and the home the best place to provide the services.

Examples of the professional services we provide include skilled nursing assessment of the heart and lungs, patient education about chronic diseases, wound care and intravenous therapy. The therapists provide services after a total joint replacement, fractured bone, stroke or a prolonged hospitalization resulting in profound weakness. Our social workers manage the HCBW program as well as any medical social issues that may be of concern.

Our agency provides services to a wide range of patient ages, from newborns who may have had a complicated delivery, to children who need therapy through the Early Periodic Diagnostic Screening and Treatment (EPSDT) program, to working

young adults, to the elderly.

If you have any questions as to whether you or your loved one qualifies for home health services, please call 502-564-7383 and ask to speak with our nurse administrator, intake nurse or social worker.

Mission Statement:
Franklin County Home Health believes in compassionate, caring home care as an important resource in the health care continuum. Both preventive and restorative care can be cost effective and demonstrative of quality.



Stephanie Willard, RN with Polly Dickinson

Environmental Health Services

The Environmental Services Team is responsible for providing over 50 regulatory inspection programs county wide to protect the health and well being of the citizens of Franklin County. Not only are mandated services conducted but complaint investigations are also a large part of our job duties. There are a variety of issues from rodent infestation, food-borne disease outbreaks, bird problems, exterior sewage problems, animal bites, illegal food manufacturing and catering operations, to plumbing plan review of regulated facilities. This variety of topics keeps each day interesting and challenging for our staff.

The Environmental Team is also required

to inspect and issue permits to food vendors at fairs and festivals, which abound in Franklin County. Each vendor must comply with state requirements to ensure that food is prepared and served in a clean, hygienic and safe environment. Some of the fairs and festivals we inspect include: Capital Expo, KSU Homecoming, the Franklin County Fair, US 127 Yard Sale, the Pumpkin Festival, Aviation Day, Candlelight Tour, various sporting events and non-profit fund raising events.

Rabies vaccination clinics are always a popular and important event. This year local veterinarians vaccinated over 950 animals against rabies at only \$5.00 per



Wes Clark, BS, RS

vaccination at the springtime clinics in May and June.

Animal bites in the past year have taken a disturbing tone with most of the 71 reported incidents being attacks and maulings, with the most common perpetrator being pit bull terriers.

Development

As Frankfort and Franklin County grows, the Environmental Health Team works hard to make sure that public health is **protected**. The lethargic economy has slowed down home building and thus our Onsite Sewage Program (permits issued and site evaluations conducted) is at a 20 year low.

When businesses and homes are foreclosed and abandoned many environmental problems be-



Gabe Tanner, BS, RS

gin to occur such as bird infestation, rodent infestation, abandoned swimming pools

Mission Statement:
To provide the community with the best possible disease free environment to ensure a better quality of life.

Training

Our Environmental Health Team provides required training to many of the individuals that we regulate. Certified Septic Installers, Certified Food Manager and Certified Food Handler trainings are provided throughout the year. Our entire staff takes a great deal of time and preparation to assure that the training will be applicable and informative for all participants.

In the past year, 513 Food Handlers completed and passed a food safety course

and 26 restaurant managers completed and passed a 4-hour Certified Food Manager class. It is imperative that the food industry workforce be educated in food safety. **Prevention** of a food-borne disease is literally in their hands as well as ours.

As well as providing training in a classroom setting, it is the goal of the entire Franklin County Health Department to help **promote** and educate all of our community through inspections, news articles, public speaking engagements, coali-

tion meetings, radio and television commercials, billboards, hand washing reminders, vaccination clinics, etc. These are just a few methods to further educate everyone on the value of good public health.



Jennifer Bardroff, BS, RS

Community Health Education Services

The Community Health Education Team offers numerous programs to inform and educate our community and ultimately to help improve the health of our community.

Our health education services address various health issues such as:

- Alcohol, tobacco and other drug use prevention
- Tobacco cessation
- Smoke Free Coalition
- Cancer prevention

- Working on Wellness (WOW) elementary school wellness program
- Puberty education
- Diabetes Coalition
- Diabetes education and cooking classes
- Child care consultations
- Abstinence-based sexuality education
- Sexually transmitted disease prevention
- Physical activity

- Nutrition
- Worksite wellness consultations

If your school, club or organization is interested in any of these programs or needs a speaker, please call us at 564-5559 for scheduling.



Healthy Start

With more and more children requiring out-of-home care, it is paramount that we are making every possible effort to educate and support our local child care providers. The Franklin County Health Department continues its commitment to support Healthy Start.

Healthy Start in Child Care is a program for child care centers, certified homes, and after school care programs. The overall goal of Healthy Start is to promote and protect the health and safety of children that are in out-of-home care settings, and to enhance the quality of child care in Ken-

tucky. The Franklin County Health Department assists in reaching this goal by providing Child Care Health Consultants that train and educate childcare providers, children, and parents in the area of health, safety, and nutrition.

The following services are available through our Healthy Start program: on-site and telephone consultation; health, safety, and nutrition information; continuing education classes (Clock Hours) for child care providers; educational classes for families and children; playground safety consultation; and periodic newsletters to update

child care providers on new releases of information and upcoming events.

In 2008 – 2009, the health department provided 305 healthy start services and 18 education classes free of charge to local centers and certified homes.

Mission Statement:
Educating the community concerning lifestyle behaviors conducive to good health and promoting overall wellness to all socioeconomic groups.

Weight: The Reality Series

Overweight and obesity continue to rise in both men and women. The proportion of U.S. adults who are obese increased to 26.1 percent in 2008 compared to 25.6 percent in 2007 (Behavioral Risk Factor Surveillance Survey). Excess weight continues as the second leading cause of preventable death in the nation due to its propensity to raise an individual's risk for the following: heart attack, stroke, high blood pressure, Type 2 diabetes and cancers of the colon, breast and prostate.

In short, overweight and obesity have become a public health emergency. The Franklin County Health Department in

collaboration with the Franklin County Extension Office offered a program designed to assist individuals with their weight struggle.

Weight, the Reality Series is a program designed to help Kentucky adults take a fresh approach to managing their body weight. The material and recommendations are derived from the National Weight Control Registry where information is collected about how some U.S. adults manage to lose excess weight and maintain a healthy weight. The program includes current, unbiased information about carbohydrates, fats, portion control, physical

activity, behavior modification, and the need for social and environmental changes to foster normal eating and activity levels.

In 2008-2009, the Franklin County Health Department offered one, 10-week session to the community. Of the 19 initial participants, 6 individuals completed the program with positive results. A total of 63 pounds was lost.



Environmental Service Statistics

| <i>Environmental Services</i> | <i>2008-2009</i> | <i>2007-2008</i> | <i>2006-2007</i> | <i>2005-2006</i> | <i>2004-2005</i> |
|--------------------------------------|------------------|------------------|------------------|------------------|------------------|
| Food Service/Retail Food Activities | 2,221 | 2,406 | 2,293 | 1,328 | 1,445 |
| Animals Vaccinated at Rabies Clinics | 959 | 1,908 | 1,927 | 1,410 | 1,856 |
| Onsite Sewage Activities | 826 | 1,354 | 1,513 | 1,629 | 2,314 |
| Nuisance Complaint Investigations | 191 | 400 | 548 | 460 | 257 |
| Animals Quarantined | 71 | 80 | 99 | 51 | 82 |
| Public Facilities Activities | 866 | 932 | 366 | 122 | 282 |

Community Health Education Service Statistics

| <i>Community Health Education Services</i> | <i>2008-2009</i> | <i>2007-2008</i> | <i>2006-2007</i> | <i>2005-2006</i> | <i>2004-2005</i> |
|--|------------------|------------------|------------------|------------------|------------------|
| <u>Working On Wellness (WOW)</u> | | | | | |
| Elementary Schools | 11 | 10 | 10 | 10 | 9 |
| 4th & 5th Grade Students | 600 | 570 | 567 | 587 | 469 |
| Children Served | 4,271 | 3,780 | 3,862 | 3,583 | 3,500 |
| <u>Diabetes Program</u> | | | | | |
| Coalition Meetings | 12 | 16 | 14 | 14 | 6 |
| Coalition Activities | 18 | 10 | 19 | 20 | 12 |
| Education Classes | 20 | 25 | 23 | 24 | 12 |
| Cooking Demonstrations | 5 | 5 | 7 | 8 | 6 |
| <u>Healthy Start Child Care Consultations</u> | | | | | |
| Child Care Provider Services | 305 | 252 | 328 | 585 | 210 |
| Classes | 18 | 18 | 30 | 16 | 11 |
| <u>Body Recall</u> | | | | | |
| Classes | 120 | 120 | 155 | 160 | 135 |
| Participants | 132 | 117 | 160 | 157 | 120 |
| <u>Child Passenger Safety Seat Program</u> | | | | | |
| Car Seats Distributed & Checked | 120 | 193 | 321 | 191 | 343 |
| Car Seat Check Events | 16 | 25 | 26 | 20 | 10 |
| <u>Cooper Clayton Smoking Cessation</u> | | | | | |
| Classes (*includes classes taught outside of HD) | 3 | 6* | 12* | 3 | 4 |
| Participants | 19 | 49* | 184* | 58 | 63 |
| <u>TV Programs</u> | | | | | |
| Working On Wellness | 12 | 10 | 6 | N/A | N/A |
| <u>Sexuality Education</u> | | | | | |
| Reducing The Risk High School Classes | 10 | 18 | N/A | N/A | N/A |
| Parent/Caregiver Education Classes | 4 | 3 | 3 | 4 | N/A |
| University Classes | 4 | 5 | 7 | 2 | N/A |
| Puberty Education Classes | 8 | 6 | 8 | 7 | N/A |
| STI Taskforce Meetings | 4 | 7 | 7 | N/A | N/A |

Home Health Service Statistics

| <i>Home Health Services</i> | <i>2008-2009</i> | <i>2007-2008</i> | <i>2006-2007</i> | <i>2005-2006</i> | <i>2004-2005</i> |
|---|------------------|------------------|------------------|------------------|------------------|
| <u>Home Health Visits</u> | | | | | |
| Nursing | 6,110 | 5,085 | 4,554 | 3,905 | 4,455 |
| Home Health Aide | 8,182 | 8,128 | 8,094 | 7,479 | 7,659 |
| Physical Therapy | 6,414 | 5,377 | 4,695 | 3,956 | 3,619 |
| Speech Therapy | 97 | 24 | 4 | 46 | 90 |
| Occupational Therapy | 984 | 810 | 709 | 526 | 528 |
| Social Services | 37 | 50 | 15 | 34 | 34 |
| VA Respite | 15 | N/A | N/A | N/A | N/A |
| VA Homemaking | 58 | N/A | N/A | N/A | N/A |
| <u>Home and Community Based Waiver Units</u> | | | | | |
| Assessment and Reassessment | 24 | 33 | 36 | 48 | 53 |
| Case Management | 735 | 752 | 637 | 707 | 685 |
| Homemaker | 2,039 | 2,521 | 3,019 | 3,488 | 3,696 |
| Personal Care | 689 | 591 | 470 | 2,589 | 2,175 |
| Respite | 142 | 183 | 151 | 312 | 460 |
| <u>Unduplicated Patient Count</u> | | | | | |
| Traditional | 535 | 544 | 538 | 516 | 384 |
| Waiver | 35 | 39 | 42 | 56 | 68 |
| EPSDT | 11 | 5 | 4 | 5 | 4 |
| Veterans Administration | 25 | 17 | N/A | N/A | N/A |

Clinic Service Statistics

| <i>Clinical Services</i> | <i>2008-2009</i> | <i>2007-2008</i> | <i>2006-2007</i> | <i>2005-2006</i> | <i>2004-2005</i> |
|-------------------------------|------------------|------------------|------------------|------------------|------------------|
| Pediatric | 14,490 | 18,559 | 17,312 | 14,424 | 10,222 |
| Family Planning | 21,347 | 27,165 | 22,094 | 22,503 | 29,204 |
| Prenatal | 912 | 447 | 491 | 544 | 523 |
| Nutrition Services | 300 | 388 | 525 | 402 | 379 |
| TB | 3,603 | 4,435 | 4,026 | 4,518 | 4,243 |
| Sexually Transmitted Diseases | 7,506 | 7,897 | 6,926 | 6,307 | 5,630 |
| Adult Health | 16,390 | 19,904 | 23,964 | 23,465 | 21,086 |
| Preventive Cancer | 5,802 | 7,348 | 5,415 | 4,533 | 4,456 |
| WIC | 18,075 | 15,279 | 13,460 | 14,254 | 14,105 |
| <u>H.A.N.D.S.</u> | | | | | |
| Families Enrolled | 103 | 111 | 122 | 135 | 105 |
| Home Visits | 1,209 | 1,347 | 1,398 | 1,538 | 1,367 |
| <u>Dental Sealants</u> | | | | | |
| Schools | 6 | 7 | 7 | 7 | 6 |
| Children Screened | 162 | 191 | 197 | 245 | 203 |

FRANKLIN COUNTY HEALTH AND SOCIAL INDICATORS, 2004

| POPULATION | | INFANT MORTALITY | | EDUCATION | | |
|---|--------|----------------------------------|--------|--|------------------|-------|
| Total | 48,148 | Total | 4 | Mothers <12 Years Education | Percent | 19.2 |
| White | 42,380 | White | 6.4 | Transition Rate (2003-2004) | County Rank | 90 |
| Black | 4,596 | Black | 5.7 | Dropout Rate (2003-2004) | Percent | 98.9 |
| Other | 9.5 | Other | 0.0 | County Rank | Percent | 2.7 |
| 65 & Older | 5,953 | REPORTABLE DISEASE CASES | | OCCUPATIONAL INJURIES | | 29 |
| Under 18 | 12.4 | Primary & Secondary Syphilis | 0 | Fatal Injuries | Total | 0 |
| Percent of Total | 10.647 | Hepatitis A | 0 | Agricultural | Agricultural | 0 |
| Percent of Total | 22.1 | Hepatitis B | 0 | Non-agricultural | Non-agricultural | 0 |
| TOTAL BIRTHS | | Tuberculosis | 0 | Nonfatal Injuries - Workers' Compensation Claims | Total | 775 |
| All Ages | 621 | Chlamydia trachomatis Infections | 145 | Total | Agricultural | 2 |
| Under 18 | 12.9 | Animal Rabies | 0 | Non-agricultural | Non-agricultural | 773 |
| Birth Rate/1000 F. Pop. 10-17 | 10.3 | Foodborne Diseases | 5 | ADULT ABUSE INCIDENTS, FY 2004 | | |
| Weight < 2500 Grams | 55 | SOCIOECONOMIC INDICATORS | | Adult Abuse | | 8 |
| Mothers w/o Prenatal Care 1st Trimester | 8.9 | Medicaid Eligible | 6,871 | Spouse Abuse | | 11 |
| Percent | 15.7 | Percent of Total Pop. | 14.3 | Partner Abuse | | 11 |
| Unmarried Births | 25.5 | Medicaid Utilizers, Unduplicated | 108 | Neglect by Caretaker | | 10 |
| Rate/1000 Live Births | 421.9 | Percent of Total Pop. | 6,282 | Self Neglect | | 2 |
| WHITE BIRTHS | | County Rank | 13.0 | Exploitation | | 6 |
| All Ages | 525 | Food Stamp Recipients, | 108 | CHILD ABUSE/NEGLECT INCIDENTS | | |
| Under 18 | 12.4 | Percent of Total Pop. | 4,238 | Physical Abuse | | 18 |
| Birth Rate/1000 F. Pop. 10-17 | 24 | Persons in Poverty, | 106 | Sexual Abuse | | 9 |
| Weight < 2500 Grams | 12.2 | Percent of Total Pop. | 5,812 | Neglect | | 113 |
| Mothers w/o Prenatal Care 1st Trimester | 9.3 | Persons <18 in Poverty, | 107 | Violent Crimes - Occurrence | | |
| Percent | 128 | County Rank | 1,783 | Homicide | | 1 |
| Unmarried Births | 24.5 | Total AFDC Recipients, | 16.7 | Rape | | 19 |
| Rate/1000 Live Births | 213 | Percent of Total Pop. | 106 | Assault | | 83 |
| BLACK BIRTHS | | County Rank | 1.4 | Robbery | | 19 |
| All Ages | 50 | Unemployed, | 113 | MOTOR VEHICLE CRASHES-OCCURRENCE | | |
| Under 18 | 10.9 | County Rank | 1,080 | Total Crashes | | 1,770 |
| Birth Rate/1000 F. Pop. 10-17 | 0 | Unemployment Rate | 4.2 | Fatal Injury Crashes | | 4 |
| Weight < 2500 Grams | 2 | County Rank | 117 | ...Involving Drinking Drivers | | 1 |
| Mothers w/o Prenatal Care 1st Trimester | 4.0 | Total WVC Recipients, | 42,306 | Non-Fatal Injury Crashes | | 308 |
| Percent | 13 | Percent of Total Pop. | 1,075 | ...Involving Drinking Drivers | | 29 |
| Unmarried Births | 27.1 | County Rank | 108 | Persons Killed | | 5 |
| Rate/1000 Live Births | 36 | | | ...Involving Drinking Drivers | | 1 |
| | 720.0 | | | ...Involving Drinking Drivers | | 451 |
| | | | | Persons Injured | | 62 |
| | | | | ...Involving Drinking Drivers | | 184 |
| | | | | Tobacco Usage Among Pregnant Women, Number | | 29.6 |
| | | | | Percent of Total | | |

Franklin County Health and Social Indicators, 2004

LEADING AND SELECTED CAUSES OF RESIDENT DEATHS, 2005

| Cause of Death | All Ages | | 1-14 Yrs. | | 15-24 Yrs. | | 25-34 Yrs. | | 35-44 Yrs. | | 45-54 Yrs. | | 55-64 Yrs. | | 65+ Yrs. | | Age Adj Rate | YPLL - 76 | | | | |
|--|----------|--------|-----------|--------|------------|------|------------|------|------------|-------|------------|-------|------------|-------|----------|--------|--------------|-----------|--------|-------|------|---|
| | No. | Rate | No. | Rate | No. | Rate | No. | Rate | No. | Rate | No. | Rate | No. | Rate | No. | Rate | | | | | | |
| FRANKLIN COUNTY | | | | | | | | | | | | | | | | | | | | | | |
| LEADING CAUSES - TOTAL POPULATION | | | | | | | | | | | | | | | | | | | | | | |
| All Causes | 514 | 1066.6 | 6 | 977.2 | 1 | 122 | 4 | 63.8 | 8 | 126.5 | 14 | 194.4 | 32 | 422.0 | 72 | 1216.2 | 377 | 6231.4 | 1051.7 | 3,894 | | |
| Diseases of Heart | 124 | 257.3 | 0 | 0.0 | 0 | 0.0 | 0 | 0.0 | 0 | 0.0 | 4 | 55.5 | 7 | 92.3 | 13 | 219.8 | 100 | 1682.9 | 257.7 | 605 | | |
| Malignant Neoplasms | 121 | 251.1 | 0 | 0.0 | 0 | 0.0 | 1 | 16.0 | 1 | 15.8 | 3 | 41.6 | 14 | 184.6 | 29 | 489.9 | 73 | 1205.6 | 233.8 | 1,120 | | |
| Cerebrovascular Diseases | 28 | 58.1 | 0 | 0.0 | 0 | 0.0 | 0 | 0.0 | 0 | 0.0 | 1 | 13.9 | 0 | 0.0 | 4 | 67.6 | 23 | 380.2 | 57.4 | 125 | | |
| Chronic Lower Respiratory Diseases | 25 | 51.9 | 0 | 0.0 | 0 | 0.0 | 0 | 0.0 | 0 | 0.0 | 0 | 0.0 | 0 | 0.0 | 0 | 0.0 | 4 | 67.6 | 21 | 347.1 | 95 | |
| Unintentional Injuries | 21 | 43.6 | 0 | 0.0 | 0 | 0.0 | 1 | 16.0 | 1 | 15.8 | 3 | 41.6 | 2 | 28.4 | 0 | 0.0 | 14 | 231.4 | 45.8 | 260 | | |
| Alzheimer's Disease | 19 | 39.4 | 0 | 0.0 | 0 | 0.0 | 0 | 0.0 | 0 | 0.0 | 0 | 0.0 | 0 | 0.0 | 0 | 0.0 | 0 | 0.0 | 19 | 314.0 | 42.1 | 0 |
| Nephritis, Nephrotic Syndrome and Nephrosis | 17 | 35.3 | 0 | 0.0 | 0 | 0.0 | 0 | 0.0 | 0 | 0.0 | 0 | 0.0 | 3 | 39.6 | 2 | 33.8 | 12 | 198.3 | 34.8 | 110 | | |
| Diabetes Mellitus | 15 | 31.1 | 0 | 0.0 | 0 | 0.0 | 0 | 0.0 | 0 | 0.0 | 0 | 0.0 | 0 | 0.0 | 0 | 0.0 | 15 | 247.9 | 32.0 | 20 | | |
| Influenza and Pneumonia | 11 | 22.8 | 0 | 0.0 | 0 | 0.0 | 0 | 0.0 | 0 | 0.0 | 0 | 0.0 | 0 | 0.0 | 1 | 16.9 | 10 | 165.3 | 22.9 | 35 | | |
| Chronic Liver Disease and Cirrhosis | 8 | 16.6 | 0 | 0.0 | 0 | 0.0 | 0 | 0.0 | 0 | 0.0 | 0 | 0.0 | 0 | 0.0 | 5 | 84.5 | 3 | 49.6 | 13.5 | 85 | | |
| SELECTED CAUSES - TOTAL POPULATION | | | | | | | | | | | | | | | | | | | | | | |
| Lung Cancer | 41 | 85.1 | 0 | 0.0 | 0 | 0.0 | 0 | 0.0 | 0 | 0.0 | 0 | 0.0 | 5 | 65.9 | 13 | 219.6 | 23 | 380.2 | 76.4 | 370 | | |
| Female Breast Cancer | 10 | 40.3 | 0 | 0.0 | 0 | 0.0 | 0 | 0.0 | 0 | 0.0 | 2 | 56.8 | 2 | 50.7 | 1 | 32.0 | 5 | 140.6 | 37.0 | 155 | | |
| Chronic Liver Disease and Cirrhosis | 8 | 16.6 | 0 | 0.0 | 0 | 0.0 | 0 | 0.0 | 0 | 0.0 | 0 | 0.0 | 0 | 0.0 | 5 | 84.5 | 3 | 49.6 | 13.9 | 85 | | |
| Motor Vehicle Crashes | 5 | 10.4 | 0 | 0.0 | 0 | 0.0 | 0 | 0.0 | 0 | 0.0 | 1 | 13.9 | 2 | 26.4 | 0 | 0.0 | 2 | 33.1 | 10.4 | 85 | | |
| Assault (Homicide) | 1 | 2.1 | 0 | 0.0 | 1 | 12.2 | 0 | 0.0 | 0 | 0.0 | 0 | 0.0 | 0 | 0.0 | 0 | 0.0 | 0 | 0.0 | 2.3 | 72 | | |
| Congenital Malformations, Deformations, etc. | 1 | 2.1 | 0 | 0.0 | 0 | 0.0 | 0 | 0.0 | 0 | 0.0 | 0 | 0.0 | 0 | 0.0 | 1 | 16.9 | 0 | 0.0 | 1.5 | 15 | | |
| Drug-Induced | 1 | 2.1 | 0 | 0.0 | 0 | 0.0 | 1 | 16.0 | 0 | 0.0 | 0 | 0.0 | 0 | 0.0 | 0 | 0.0 | 0 | 0.0 | 2.2 | 55 | | |
| LEADING CAUSES - WHITE | | | | | | | | | | | | | | | | | | | | | | |
| All Causes | 489 | 1153.6 | 5 | 981.5 | 1 | 14.2 | 4 | 85.1 | 7 | 128.7 | 13 | 201.3 | 30 | 432.8 | 67 | 1200.5 | 362 | 6320.9 | 1071.0 | 3,580 | | |
| Diseases of Heart | 118 | 278.4 | 0 | 0.0 | 0 | 0.0 | 0 | 0.0 | 0 | 0.0 | 4 | 61.9 | 7 | 101.0 | 12 | 215.0 | 95 | 1658.8 | 261.2 | 580 | | |
| Malignant Neoplasms | 117 | 276.0 | 0 | 0.0 | 0 | 0.0 | 1 | 21.3 | 1 | 18.4 | 3 | 46.5 | 13 | 187.6 | 28 | 501.7 | 71 | 1239.7 | 241.6 | 1,075 | | |
| Cerebrovascular Diseases | 27 | 63.7 | 0 | 0.0 | 0 | 0.0 | 0 | 0.0 | 0 | 0.0 | 1 | 15.5 | 0 | 0.0 | 4 | 71.7 | 22 | 384.1 | 58.4 | 125 | | |
| Chronic Lower Respiratory Diseases | 24 | 56.6 | 0 | 0.0 | 0 | 0.0 | 0 | 0.0 | 0 | 0.0 | 0 | 0.0 | 0 | 0.0 | 4 | 71.7 | 20 | 349.2 | 51.1 | 95 | | |
| Unintentional Injuries | 21 | 49.5 | 0 | 0.0 | 0 | 0.0 | 1 | 21.3 | 1 | 18.4 | 3 | 46.5 | 2 | 28.9 | 0 | 0.0 | 14 | 244.5 | 50.0 | 260 | | |
| Alzheimer's Disease | 18 | 42.5 | 0 | 0.0 | 0 | 0.0 | 0 | 0.0 | 0 | 0.0 | 0 | 0.0 | 0 | 0.0 | 0 | 0.0 | 18 | 314.3 | 42.3 | 0 | | |
| Nephritis, Nephrotic Syndrome and Nephrosis | 17 | 40.1 | 0 | 0.0 | 0 | 0.0 | 0 | 0.0 | 0 | 0.0 | 0 | 0.0 | 3 | 43.3 | 2 | 35.8 | 12 | 209.5 | 37.1 | 110 | | |
| Diabetes Mellitus | 14 | 33.0 | 0 | 0.0 | 0 | 0.0 | 0 | 0.0 | 0 | 0.0 | 0 | 0.0 | 0 | 0.0 | 0 | 0.0 | 14 | 244.5 | 31.5 | 20 | | |
| Influenza and Pneumonia | 11 | 25.9 | 0 | 0.0 | 0 | 0.0 | 0 | 0.0 | 0 | 0.0 | 0 | 0.0 | 0 | 0.0 | 1 | 17.9 | 10 | 174.6 | 24.2 | 35 | | |
| Chronic Liver Disease and Cirrhosis | 7 | 16.5 | 0 | 0.0 | 0 | 0.0 | 0 | 0.0 | 0 | 0.0 | 0 | 0.0 | 0 | 0.0 | 4 | 71.7 | 3 | 52.4 | 12.8 | 70 | | |
| LEADING CAUSES - BLACK | | | | | | | | | | | | | | | | | | | | | | |
| All Causes | 23 | 502.7 | 1 | 1612.9 | 0 | 0.0 | 0 | 0.0 | 1 | 155.3 | 1 | 173.6 | 2 | 361.7 | 5 | 2016.1 | 13 | 5000.0 | 927.9 | 305 | | |
| Diseases of Heart | 6 | 131.1 | 0 | 0.0 | 0 | 0.0 | 0 | 0.0 | 0 | 0.0 | 0 | 0.0 | 0 | 0.0 | 1 | 403.2 | 6 | 1923.1 | 266.2 | 25 | | |
| Malignant Neoplasms | 3 | 65.6 | 0 | 0.0 | 0 | 0.0 | 0 | 0.0 | 0 | 0.0 | 0 | 0.0 | 1 | 180.8 | 1 | 403.2 | 1 | 384.6 | 103.9 | 45 | | |
| Cerebrovascular Diseases | 1 | 21.9 | 0 | 0.0 | 0 | 0.0 | 0 | 0.0 | 0 | 0.0 | 0 | 0.0 | 0 | 0.0 | 0 | 0.0 | 0 | 384.6 | 41.9 | 0 | | |
| Certain Conditions Originating in the Perinatal Period | 1 | 21.9 | 1 | 1612.9 | 0 | 0.0 | 0 | 0.0 | 0 | 0.0 | 0 | 0.0 | 0 | 0.0 | 0 | 0.0 | 0 | 0.0 | 22.3 | 75 | | |
| Chronic Liver Disease and Cirrhosis | 1 | 21.9 | 0 | 0.0 | 0 | 0.0 | 0 | 0.0 | 0 | 0.0 | 0 | 0.0 | 0 | 0.0 | 1 | 403.2 | 0 | 0.0 | 35.2 | 15 | | |
| Chronic Lower Respiratory Diseases | 1 | 21.9 | 0 | 0.0 | 0 | 0.0 | 0 | 0.0 | 0 | 0.0 | 0 | 0.0 | 0 | 0.0 | 0 | 0.0 | 1 | 384.6 | 41.9 | 0 | | |
| Diabetes Mellitus | 1 | 21.9 | 0 | 0.0 | 0 | 0.0 | 0 | 0.0 | 0 | 0.0 | 0 | 0.0 | 0 | 0.0 | 0 | 0.0 | 1 | 384.6 | 60.6 | 0 | | |
| Hypertension and Hypertensive Renal Disease | 1 | 21.9 | 0 | 0.0 | 0 | 0.0 | 0 | 0.0 | 0 | 0.0 | 0 | 0.0 | 0 | 0.0 | 1 | 403.2 | 0 | 0.0 | 35.2 | 15 | | |
| Human Immunodeficiency Virus (HIV) Disease | 1 | 21.9 | 0 | 0.0 | 0 | 0.0 | 0 | 0.0 | 0 | 0.0 | 0 | 0.0 | 1 | 180.8 | 0 | 0.0 | 0 | 0.0 | 24.4 | 25 | | |
| Septicemia | 1 | 21.9 | 0 | 0.0 | 0 | 0.0 | 0 | 0.0 | 0 | 0.0 | 0 | 0.0 | 0 | 0.0 | 0 | 0.0 | 1 | 384.6 | 44.3 | 5 | | |

ZORA: A HEALTH AND COMMUNITY IMPROVEMENT STRATEGY FOR FRANKLIN COUNTY, MISSOURI

**Franklin County
Health Department**

100 Glenn's Creek Road
Frankfort, KY 40601

Business Office

Phone: 502-564-4269

Fax: 502-564-9586

Clinic Services

Phone: 502-567-7647

Fax: 502-564-9640

Franklin County Home Health Agency

231 East Main Street

Frankfort, KY 40601

Home Health Services

Phone: 502-564-7383

Fax: 502-564-9587

Public Health Center

851 East-West Connector

Frankfort, KY 40601

Environmental Services

Phone: 502-564-7382

Fax: 502-564-5672

Community Health Education

Phone: 502-564-5559

Fax: 502-564-5672

Emergency Preparedness

Phone: 502-564-9336

Fax: 502-564-5672

WWW.FHCD.ORG



Public Health
Prevent. Promote. Protect.