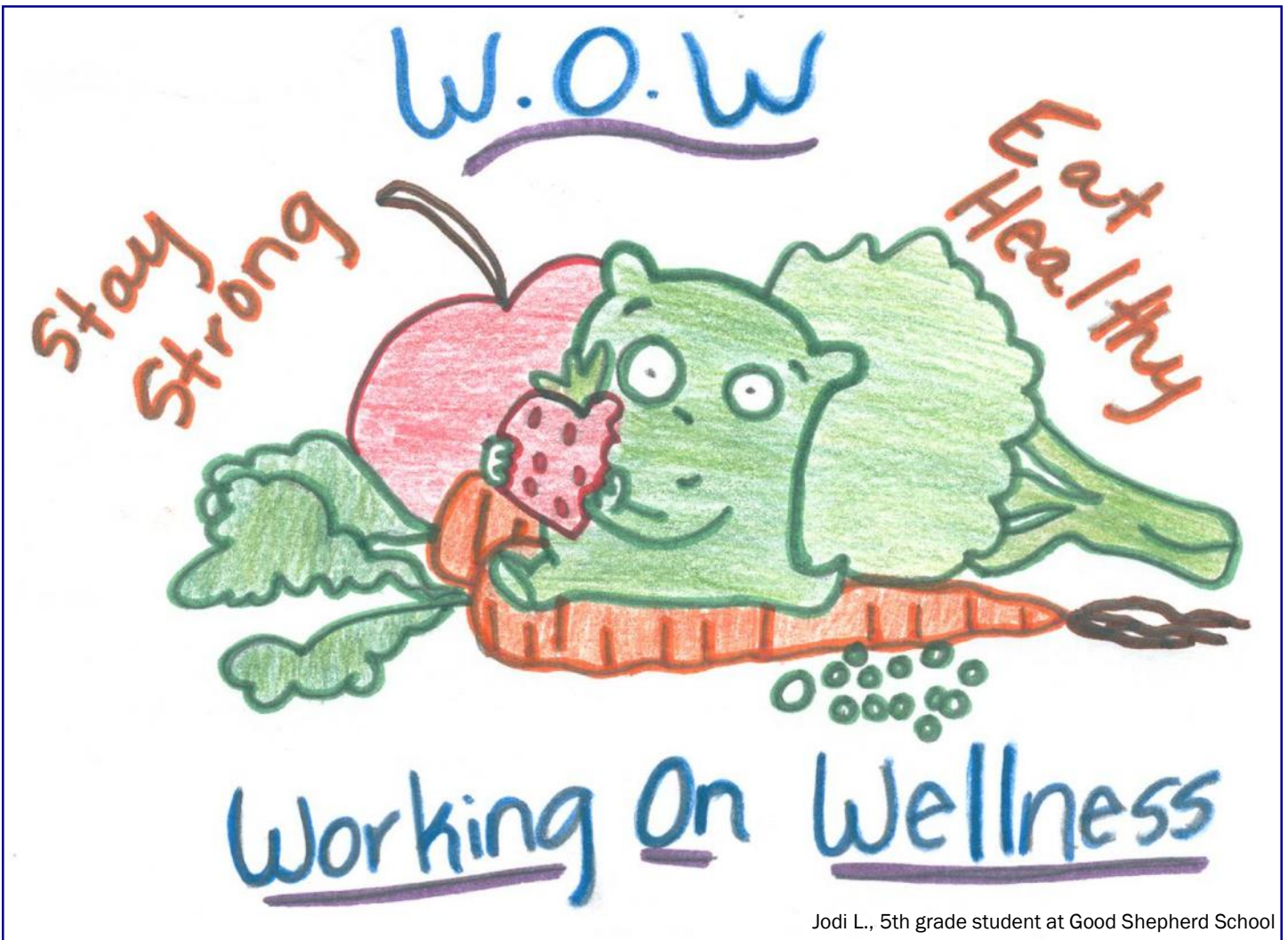


2007/2008

**ANNUAL REPORT**



Jodi L., 5th grade student at Good Shepherd School

**FRANKLIN COUNTY  
HEALTH DEPARTMENT  
WWW.FCHD.ORG**



**Public Health**  
Prevent. Promote. Protect.



## Franklin County Health Department

**Public Health**  
Prevent. Promote. Protect.

### BUSINESS OFFICE

Dear Franklin County Friends and Neighbors:

This Annual Report from the Franklin County Health Department (FCHD) has been published to update you on our many mutual achievements over the just completed Fiscal Year 2008. The report includes a glimpse of our goals for Fiscal Year 2009 so that we can continue to chip away at the “challenges” and build upon our successes. We are all public health beneficiaries and consumers. I therefore ask that you take several minutes to read this report and then share your ideas on how we all can collectively and more effectively work together to improve Franklin County’s public health system.

The health department is one part of this amazing, complex system, which also includes our public and private schools and local university, merchants, the faith-based community, transportation, public protection agencies, social services, governmental entities, parks and recreation, hospitals and other health care providers, and many more, including you. In keeping with the public health mandates of “Assurance, Assessment and Policy Development”, FCHD is committed to ongoing efforts to strengthen Franklin County’s public health system.

One of the best measurements of how we are doing is attention to the nationally agreed upon “Ten Essential Services of Public Health” (see page 5). As we progress into Fiscal Year 2009 and beyond, you may expect to hear much more about these Ten Essential Services and our move to public health accreditation. We serve you from our three campus sites: the Clinic/Business Office at 100 Glenn’s Creek Road, Home Health at 231 East Main Street, and at the Public Health Center, 851 East-West Connector.

As you will see in this report, our major health challenges continue to include heart disease and cancer. Many of these conditions could be greatly reduced by a greater group and individual focus on health risk behaviors, such as smoking cessation and prevention, elimination of second hand smoke, healthier nutrition and increased physical activity. (See our Community Health Profile on pages 14-15, for 2004 and 2005 data, the most recent available from the state Department for Public Health.)

I cannot emphasize it enough: we are all part of Franklin County’s public health system. You have directly and/or indirectly visited with FCHD, whether through visits to our Clinic or by Home Health services, or by information provided through our Health Education Department, or by purchase of food products or through other means. Perhaps you brought a pet to one of our “Rabies Clinics” with our veterinarian partners or maybe you sought us out for your annual flu shot. Please continue to be an active partner and let us know how we can serve you better, by calling any of our departments or visiting our website, [www.fchd.org](http://www.fchd.org).

In service to a healthier Franklin County,

Charles P. Bradshaw, DMD  
Chairman, Franklin County Board of Health



Dr. Bradshaw



Clinic Services  
Business Office



Franklin County Home  
Health Agency



Public Health Center  
Environmental Services  
Community Health  
Education  
Emergency Preparedness

**ABOUT US**

**Our Vision**

We are a dynamic and progressive organization that proudly serves the diverse community needs with compassion and high quality services. We will continue to evolve and strive to serve customers in an efficient, effective manner that promotes trust and leadership.

**Our Mission**

Provide high quality compassionate and cost effective services to promote and preserve the health, well-being and safety of our community.

**Our Core Values**

- Competent
- Accessible
- Progressive
- Professional
- Trustworthy
- Compassionate
- Knowledgeable

**AWARDS**

**FRED GOINS SPIRIT AWARD**



**Wes Clark, RS**  
Senior Environmentalist

**ROSIE MIKLAVCIC ABOVE & BEYOND AWARD**



**Rosie Miklavcic, RN, BSN, MPH**

**COMMUNITY SERVICE AWARD**



**Franklin County Diabetes Coalition, Inc.**

**YOUTH ACHIEVEMENT AWARD**



**Matthew D. Spicer**

**ADVISORY COMMITTEES**

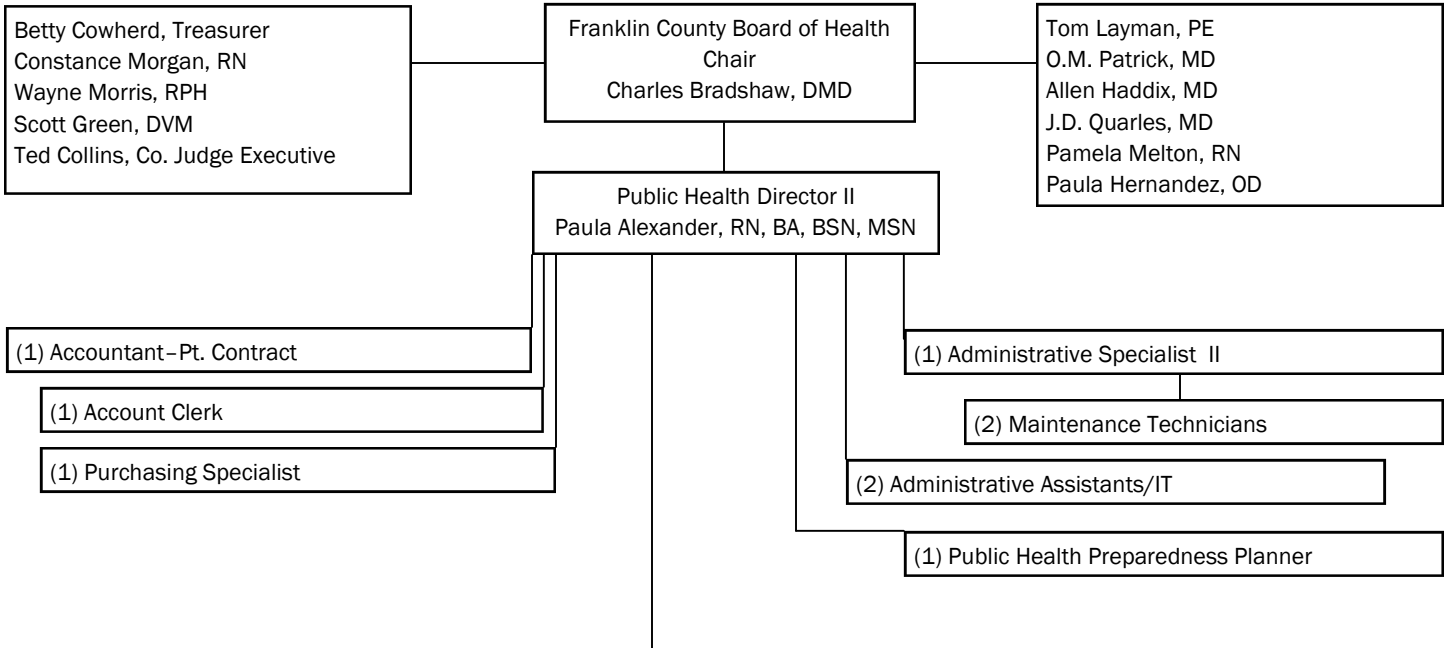
**Clinic and Community Health Education**

- |                  |                     |
|------------------|---------------------|
| Pat Bacon        | Alice Martinson     |
| Dr. Joe Bell     | Virginia Morris     |
| Mac Bray         | Jeffery Poe         |
| Cathy Cooke      | June Robinson       |
| Betty Cowherd    | Rochelle Silvernail |
| Patty Crittenden | Dr. Mark Wainwright |
| Glenna Hughes    | Deborah Wigginton   |
| Lori Ivy         |                     |

**Home Health**

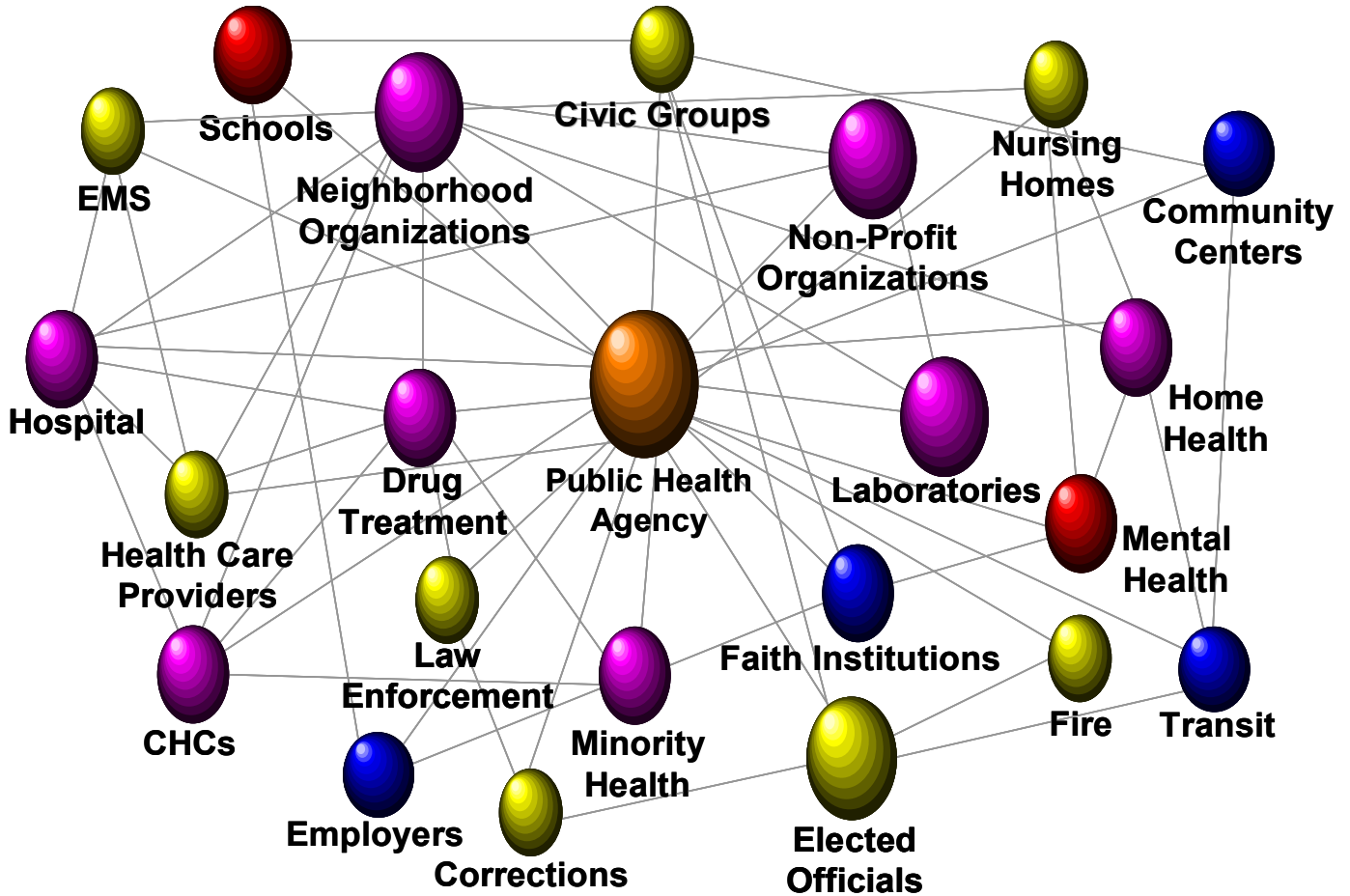
- Cathy Carter
- Rev. Stephen Flynn
- Priscilla Hazelett
- Bonnie Quarles, RN
- Paula Rutledge
- Vicki Sebastian, RN
- Bryan Shouse, MD
- Don Sturgeon
- Lisa Wiard, RN

**FISCAL YEAR 2007-2008 ORGANIZATION CHART**



<p>Medical Clinic Nurse Administrator Tammie Bertram, RN, BSN</p>	<p>Environmental Health Director Kendra Palmer, BS, RS</p>	<p>Health Education Director Deborah Howes-Fleming, BA</p>	<p>Franklin County Home Health Agency Nurse Administrator Karen Weller, RN</p>
<p>Community/Clinic Advisory Council</p>		<p>Community/Clinic Advisory Council</p>	<p>Home Health Advisory Committee</p>
<p>(1) ARNP (1) ARNP-Pt. Contract (8) RN's (1) RN-Pt. Contract (1) Sr. Clinical Assistant (1) Support Services Coordinator (2) Account Clerks (5) Sr. Support Services Associates (1) Clinical Nutritionist (1) H.A.N.D.S. Coordinator (2) RN's, Home Visitors- H.A.N.D.S. (1) LPN, Home Visitor- H.A.N.D.S. (1) Family Support Worker/ Home Visitor- H.A.N.D.S. (1) Interpreter/Translator</p>	<p>(3) Sr. Health Environmentalists</p>	<p>(1) Health Educator III (2) Health Educators II</p>	<p>(1) Nursing Supervisor (7) RN's (1) RN-Pt. Contract (1) Social Worker (3) Sr. Home Health Aides (6) Home Health Aides (1) Support Services Coordinator (1) Prin. Support Staff (2) Sr. Support Staff (1) Sr. Account Clerk (7) Therapists-Pt. Contract</p>

**PUBLIC HEALTH SYSTEM**



**TEN ESSENTIAL PUBLIC HEALTH SERVICES**

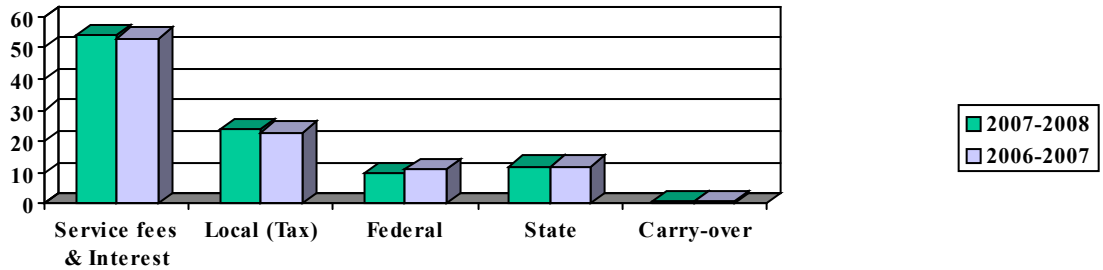
1. Monitor health status to identify and solve community health problems.
2. Diagnose and investigate health problems and health hazards in the community.
3. Inform, educate, and empower people about health issues.
4. Mobilize community partnerships to identify and solve health problems.
5. Develop policies and plans that support individual and community health efforts.
6. Enforce laws and regulations that protect health and ensure safety.
7. Link people to needed personal health services and assure the provision of health care when otherwise unavailable.
8. Assure a competent public health care workforce.
9. Evaluate effectiveness, accessibility and quality of personal and population-based health services.
10. Research for new insights and innovative solutions to health problems.

**“Promote physical and mental health and prevent disease, injury and disability.”**  
**-Public Health in America Mission**

**REVENUE SOURCES**

Sources	2007-2008	Percent	2006-2007	Percent
Service fees & Interest	\$2,809,792	54%	\$2,681,158	53%
Local (tax)	\$1,234,779	24%	\$1,180,536	23%
Federal	\$502,373	10%	\$551,556	11%
State	\$630,310	12%	\$646,261	12%
Carry-over & Reserve	\$13,576	<1%	\$46,664	1%
<b>Total</b>	<b>\$5,190,830</b>	<b>100%</b>	<b>\$5,106,175</b>	<b>100%</b>

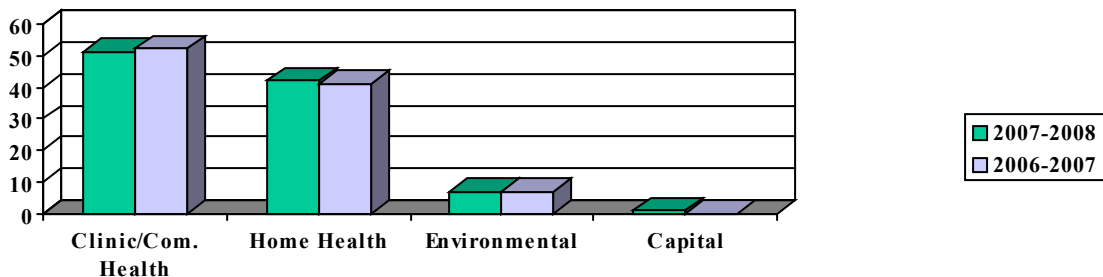
2007-2008 VS. 2006-2007 Revenue Sources



**REVENUE ALLOCATIONS**

Allocations	2007-2008	Percent	2006-2007	Percent
Clinic/Community Health	\$2,517,959	51%	\$2,456,823	52%
Home Health	\$2,105,687	42%	\$1,931,676	41%
Environmental Health	\$329,863	7%	\$348,156	7%
Capital	\$21,715	<1%	\$0	0%
<b>Total</b>	<b>\$4,975,154</b>	<b>100%</b>	<b>\$4,736,655</b>	<b>100%</b>

2007-2008 VS. 2006-2007 Revenue Allocations



## NATIONAL PUBLIC HEALTH PERFORMANCE STANDARDS PROGRAM

During the later part of Fiscal Year 2008, the Franklin County Health Department made a commitment to bring the National Public Health Performance Standards Program (NPHPSP) to our community, to help assure an ever-improving county. This commitment will continue to carry over into positive action items during Fiscal Year 2009, and beyond.

The NPHPSP is a collaborative effort of seven national public health partners: The Centers for Disease Control and Prevention, the American Public Health Association, the Association of State and Territorial Health Officials, the National Association of County and City Health Officials, the National Network of Public Health Institutes, the National Association of Local Boards of Health and the Public Health Foundation. The purpose of the NPHPSP is public health practice

improvement throughout a community's public health system.

The health department is one of many partners in this system. Other members include but are not limited to businesses and the Chamber of Commerce, fire and police departments, emergency management personnel, the fiscal court and the judge executive, city commissioners and the mayor, the local hospital and medical offices, schools, parks and recreation, our faith organizations, social service and protective organizations, transportation personnel and daycares. The NPHPSP brings together personnel from these seemingly diverse agencies to help identify our public health system's strengths and weaknesses and then decide upon opportunities for continuous improvement.

Three NPHPSP instruments were released in 2002, following a

comprehensive development and testing process. The three instruments include a state assessment, a local public health assessment and a local governance assessment. More than 21 states and some 1,000 national localities have since used the instruments and submitted data. The instruments were updated in 2005. Franklin County's initiative with the local public health assessment is based on this Version 2, and we are now to be included in this national tally. Our Board of Health has also expressed interest in the local governance instrument. We expect to report back to you on findings from these instruments in the Fiscal Year 2009 Annual Report, and include strategic planning priorities. Please continue to support Franklin County's public health system with your involvement and feedback.



National Public Health Performance Standards Program

**"The purpose of the NPHPSP is public health practice improvement throughout a community's public health system."**

## PUBLIC HEALTH PREPAREDNESS

The Public Health Preparedness activities for fiscal year 2008 have been centered on developing response plans and partners to protect the citizens of Franklin County in the event of a bioterrorism incident or disease outbreak. The Preparedness Planner has been actively engaged with the Office of Emergency Management, the American Red Cross, Franklin County Schools, Frankfort Police Department, Frankfort Regional Medical Center and local large businesses in developing plans to dispense medication in the event of a public health emergency.

Under the plan, assets from the Strategic National Stockpiles (SNS), provided by the Centers for Disease Control and Preven-

tion (CDC), would be distributed by setting up points of dispensing (PODs) in the community. The Franklin County Health Department (FCHD) would be responsible for the receipt, storage and distribution of these federal medical assets. Much progress has been made in meeting the critical components identified by the CDC for the development of a successful SNS and POD plan.

The largest asset FCHD will have available during an emergency are FCHD employees who will be called upon to staff POD sites around the county. During the year, FCHD staff was trained on their roles and responsibilities and tabletop exercises were conducted to familiarize staff with the SNS plan and POD op-

erations. Volunteers are also being recruited for membership in the Franklin County Medical Reserve Corps. Both medical professionals and non-medical volunteers will be needed to staff a prolonged high volume dispensing operation.

In the upcoming year, the Preparedness Planner will continue to strengthen the SNS plan and develop new partnerships to ensure that the preparedness plans for Franklin County will meet the county's needs during any health emergency. FCHD will remain a leader in our endeavor to prevent, promote and protect our community through quality public health programs.



CCU Drive-Through Flu Clinic

## CLINIC SERVICES



Clinic Medical Staff



Clinic Support Staff

## CLINIC CHANGES

The Franklin County Health Department Clinic is changing to respond to the needs of our community. The changes will address the need for later appointment times and the need for more payment options.

The hours of operation for our Clinic will be extended from 4:30pm to 6:30pm on Tuesdays, Wednesdays and Thursdays. Hours will remain the same on Mondays and

Fridays.

Payment options are more convenient since we are now accepting debit and credit cards. Very soon we will also be able to accept most major insurance policies.

The method of determining charges is also changing. We will now be using a sliding fee scale to determine charges according to income. However, all communicable disease services and childhood

immunizations will remain at a very low flat rate. Of course no one will be denied basic services due to an inability to pay.

We hope these changes will make managing your health care easier and will thus help to improve your health! If you have any questions please call us at 564-7647.

### Mission Statement:

To provide the opportunity for our community to be healthy through quality care given by a knowledgeable and compassionate staff.

## WIC

One of the numerous services offered by our clinic is the Women, Infant and Children Supplemental Nutrition Program, which is commonly referred to as WIC. WIC serves pregnant women, breastfeeding women, post-partum women (up to six months) and infants and children up to five years of age. This is a federal program that is designed to pro-

vide eligible participants with nutritional counseling and free nutritious foods at critical periods of growth and development.

The counseling services are offered both privately and in the group setting and teach individuals how to choose and prepare nutrient dense and affordable foods. WIC services also include check-ups for proper growth and

development, screenings for appropriate weight, height and hemoglobin levels and distribution of WIC vouchers. There are over 1,200 recipients of the WIC program in Franklin County.



Tammie Bertram, RN, BSN  
Clinic Nurse Administrator

## HOME HEALTH SERVICES

Today our agency employs over 30 full time and contract employees providing skilled care such as nursing, physical, occupational and speech therapy. Our skilled nursing care includes assessments of the heart and lungs, wound care, intravenous therapy and patient education. The therapists will develop a home exercise program to

help patients regain independence after a fracture, joint replacement surgery, a stroke or prolonged hospitalization. Home health aides are available for personal care and a social worker helps with long range planning as well as other social issues, such as financial crises, emotional counseling and placement options.

Waiver services that include homemaking and respite services are available to patients who qualify for the Home and Community Based Waiver program.

If you have any questions about our services or to see if you qualify for home care, please call 564-7383.



Rachel Rome with Bette Wallace

## HOMECARE ELITE

Franklin County Home Health Agency (FCHHA) has been named to the 2007 HomeCare Elite, a compilation of the most successful Medicare certified home care providers. The agency has been designated as part of the top 25% of agencies in the United States and is the only agency in Franklin County to receive such a distinction. The data used for the analysis for the award is available

at [www.medicare.gov](http://www.medicare.gov). The HomeCare Elite status shows that FCHHA is dedicated to providing high quality care, which can be accredited to the well trained and experienced staff members.

The agency is a program of the Franklin County Health Department and is the largest and the only nonprofit agency in Franklin County. FCHHA can provide nursing,

therapy, social worker and home health aide services. If you or your loved one is homebound, lives in Franklin County and needs a skilled service, ask your doctor to refer you to FCHHA. It is important for the public to know that they may request a specific agency to provide home care services and Franklin County residents should request FCHHA for their home care needs!

## PAYMENT FOR HOME HEALTH CARE

Our agency experienced tremendous growth through the mid 1990s, as did the home health industry in general. Home health agencies were reimbursed on a fee for service basis- we received payment for every visit made to provide a service. In 1998 the Balanced Budget Act was passed by Congress and signed by President Clinton. This meant sweeping changes in reimbursement

for the home health industry. Under the Prospective Payment System, which is still in effect today, agencies received payment by the episode- the period of time a patient receives home care. A patient's diagnosis and the data collected by the skilled professional, called OASIS (Outcome Assessment Information Set), translates into a dollar figure. Agencies receive that amount no matter

how many services are provided for however long it takes for the patient's goals to be met. Many for-profit agencies were forced to close their doors during this time of change because of the drastic decrease in reimbursement. FCHHA survived the changes and has gone on to thrive.

### Mission Statement:

Franklin County Home Health believes in compassionate, caring home care as an important resource in the health care continuum. Both preventive and restorative care can be cost effective and demonstrative of quality.



Crystal Middleton & Alicia Topass with Joyce Carmon

## ENVIRONMENTAL HEALTH SERVICES

The Environmental Services Team is responsible for providing over 50 regulatory inspection programs county wide to protect the health and well being of the citizens of Franklin County. Not only are mandated services conducted but complaint investigations are also a large part of our job duties. There is a myriad of issues from rodent infestation, food-borne disease outbreaks, bird problems, exterior sewage problems, mosquito identification, animal bites, illegal food manufacturing to plumbing plan review for all new commercial facilities. This variety

of topics keeps each day interesting and challenging for our staff.

The Environmental Team is also required to inspect and issue permits to food vendors at fairs and festivals, which abound in Franklin County. Each vendor must comply with state requirements to ensure that food is prepared and served in a clean, hygienic and safe environment. Some of the fairs and festivals we inspect include: Capital Expo, KSU Homecoming, the Franklin County Fair, US 127 Yard Sale, the Pumpkin Festival, Governor's Inau-

guration, Aviation Day, Candlelight Tour and various sporting events and non-profit fundraising events.

Rabies vaccination clinics are always a popular and important event. This year local veterinarians vaccinated over 1,900 animals against rabies at only \$5.00 per vaccination at the springtime clinics in May and June.

Animal bites in the past year have taken a disturbing tone with most of the **80 reported** incidents being attacks and maulings, the most common perpetrator being pit bull terriers.



Gabe Tanner, BS, RS



Wes Clark, BS, RS

## DEVELOPMENT

As Frankfort and Franklin County grows, the Environmental Health Team works hard to make sure that public health is **protected**. East Frankfort is slowly beginning

to resemble the west side with new restaurants, retail shopping centers and a new elementary school. The sluggish economy has halted home building and thus our

Onsite Sewage Program (permits issued and site evaluations conducted) is at a 20 year low.

## TRAINING

Our Environmental Health Team provides required training to many of the individuals that we regulate. Certified Septic Installers, Certified Food Manager and Certified Food Handler trainings are provided throughout the year. Our entire staff takes a great deal of time and preparation to assure that the trainings will be applicable and informative for all participants.

In the past year, 613 Food

Handlers completed and passed a food safety course and 63 restaurant managers completed and passed a 4-hour Certified Food Manager class. It is imperative that the food industry workforce be educated in food safety, as **prevention** of a food-borne disease is literally in their hands as well as ours.

As well as providing training in a classroom setting, it is the goal of the entire Franklin

County Health Department to help **promote** and educate all our community through inspections, news articles, public speaking engagements, coalition meetings, radio and television commercials, billboards, hand washing reminders, vaccination clinics, etc. – just a few methods to further educate everyone on the value of good public health.

### Mission Statement:

To provide the community with the best possible disease free environment to ensure a better quality of life.



Jennifer Bardroff, BS, RS

## COMMUNITY HEALTH EDUCATION SERVICES

The Community Health Education Team offers numerous programs to inform and educate our community and ultimately to help improve the health of our community.

Our health education services address various health issues such as:

- Alcohol, tobacco and other drug use prevention

- Tobacco cessation
- Smoke Free Coalition
- Cancer prevention
- Working on Wellness (WOW) elementary school wellness program
- Puberty education
- Diabetes Coalition
- Diabetes education and cooking classes
- Child care consultations
- Abstinence-based sexuality education
- Sexually transmitted disease prevention
- Physical activity
- Nutrition
- Worksite wellness consultations

If your school, club or organization is interested in any of these programs or needs a speaker, please call us at 564-5559 for scheduling.



Working On Wellness Carnival

## 4TH ANNUAL DIABETES EXPO

The Franklin County Diabetes Coalition, Inc. hosted its 4<sup>th</sup> Annual Diabetes Awareness Expo, Saturday, November 3, 2007 from 9:30 am – 3 pm at the Franklin County Public Health Center. The program was a collaboration of efforts from the local diabetes coalition, Frankfort Regional Medical Center, and the Franklin County Health Department. In its fourth year, we enjoyed a crowd of just over 125 participants, which is consistent with the participation over the past 3 years.

The day began with an outstanding opening presenta-

tion by Dr. Jason Harrod, "Caring for your Feet". Immediately following were two equally informative sessions regarding diabetes meal planning and kidney care. All participants were invited to enjoy a *Healthy Gourmet Lunch* compliments of the Franklin County Diabetes Coalition and to visit the many vendor booths that were present during the day's festivities for more information on diabetes management.

The highlight of the day's events concluded with an *Ask the Expert Panel Discussion*.

The coalition was very pleased to welcome the following disciplines: Dr. Kim Bell, Internist; Dr. Joe Bell, Dentist, Mac Bray, Pharmacist, Dr. Rezekella Butros, Nephrologist, Debbie Bell, Dietitian and Dr. Caroline Munson, Ophthalmologist. These fine health care providers gladly answered questions from the audience regarding their personal diabetes management concerns.

The response from the audience was tremendous and they are all looking forward to next year's event.

### Mission Statement:

Educating the community concerning lifestyle behaviors conducive to good health and promoting overall wellness to all socioeconomic groups.

## TALKING WITH KIDS ABOUT SEXUALITY AND HIV/STI

Parents are sexuality educators whether they choose to be or not. That is one reason why the Kentucky Parent Teacher Association, Department for Public Health and Western Kentucky University developed "Talking with Kids about Sexuality and HIV/STI".

Some of the tips given for improved parent-child communication include:

1. Start Early.
2. If the subject doesn't come up, DON'T WAIT.
3. Review your values

4. Learn basic facts about sexual health, reproduction, contraception, STI/HIV and safer sex.
  5. Create an open environment.
  6. Give simple and honest responses.
  7. Ask for feedback.
  8. Show you value your child's thoughts by asking open-ended questions that allow them to explore their own feelings.
  9. Talk through with someone you trust – spouse/partner, family member, friend, another parent, clergy or health care provider.
  10. Talk again AND again.
- One thing parents definitely take away from this training is that talking with kids about sexuality is NOT a one time talk. For more information about this program or to schedule this parent education training for your group please contact the Community Health Education Team.



Diabetes Expo Presentation

**ENVIRONMENTAL SERVICE STATISTICS**

<i>Environmental Services</i>	<b>2007-2008</b>	<b>2006-2007</b>	<b>2005-2006</b>	<b>2004-2005</b>
Food Service/Retail Food Activities	2,406	2,293	1,328	1,445
Animals Vaccinated for Rabies	1,908	1,927	1,410	1,856
Onsite Sewage Activities	1,354	1,513	1,629	2,314
Nuisance Complaint Investigations	400	548	460	257
Animals Quarantined	80	99	51	82
Public Facilities Activities	932	366	122	282

**COMMUNITY HEALTH EDUCATION SERVICE STATISTICS**

<i>Community Health Education Services</i>	<b>2007-2008</b>	<b>2006-2007</b>	<b>2005-2006</b>	<b>2004-2005</b>
<b><u>Working On Wellness (WOW)</u></b>				
Elementary Schools	10	10	10	9
4th & 5th Grade Students	570	567	587	469
Children Served	3,780	3,862	3,583	3,500
<b><u>Diabetes Program</u></b>				
Coalition Meetings	16	14	14	6
Coalition Activities	10	19	20	12
Education Classes	25	23	24	12
Cooking Demonstrations	5	7	8	6
<b><u>Healthy Start Child Care Consultations</u></b>				
Child Care Provider Services	252	328	585	210
Classes	18	30	16	11
<b><u>Body Recall</u></b>				
Classes	120	155	160	135
Participants	117	160	157	120
<b><u>Child Passenger Safety Seat Program</u></b>				
Car Seats Distributed & Checked	193	321	191	343
Car Seat Check Events	25	26	20	10
<b><u>Cooper Clayton Smoking Cessation</u></b>				
Classes (*includes classes taught outside of HD)	6*	12*	3	4
Participants	49*	184*	58	63
<b><u>TV Programs</u></b>				
Working On Wellness	10	6	N/A	N/A
<b><u>Sexuality Education</u></b>				
Reducing The Risk High School Classes	18	N/A	N/A	N/A
Parent/Caregiver Education Classes	3	3	4	N/A
University Classes	5	7	2	N/A
Puberty Education Classes	6	8	7	N/A
STI Taskforce Meetings	7	7	N/A	N/A

**HOME HEALTH SERVICE STATISTICS**

<i>Home Health Services</i>	<b>2007-2008</b>	<b>2006-2007</b>	<b>2005-2006</b>	<b>2004-2005</b>
<b><u>Home Health Visits</u></b>				
Nursing	5,085	4,554	3,905	4,455
Home Health Aide	8,128	8,094	7,479	7,659
Physical Therapy	5,377	4,695	3,956	3,619
Speech Therapy	24	4	46	90
Occupational Therapy	810	709	526	528
Social Services	50	15	34	34
<b><u>Home and Community Based Waiver Units</u></b>				
Assessment and Reassessment	33	36	48	53
Case Management	752	637	707	685
Homemaker	2,521	3,019	3,488	3,696
Personal Care	591	470	2,589	2,175
Respite	183	151	312	460
<b><u>Unduplicated Patient Count</u></b>				
Traditional	544	538	516	384
Waiver	39	42	56	68
EPSDT	5	4	5	4
Veterans Administration	17	N/A	N/A	N/A

**CLINIC SERVICE STATISTICS**

<i>Clinical Services</i>	<b>2007-2008</b>	<b>2006-2007</b>	<b>2005-2006</b>	<b>2004-2005</b>
Pediatric	18,559	17,312	14,424	10,222
Family Planning	27,165	22,094	22,503	29,204
Prenatal	447	491	544	523
Nutrition Services	388	525	402	379
TB	4,435	4,026	4,518	4,243
Sexually Transmitted Diseases	7,897	6,926	6,307	5,630
Adult Health	19,904	23,964	23,465	21,086
Preventive Cancer	7,348	5,415	4,533	4,456
WIC	15,279	13,460	14,254	14,105
<b><u>H.A.N.D.S.</u></b>				
Families Enrolled	111	122	135	105
Home Visits	1,347	1,398	1,538	1,367
<b><u>Dental Sealants</u></b>				
Schools	7	7	7	6
Children Screened	191	197	245	203

COMMUNITY HEALTH PROFILE

FRANKLIN COUNTY  
HEALTH AND SOCIAL INDICATORS, 2004

POPULATION	INFANT MORTALITY	REPORTABLE DISEASE CASES	EDUCATION	OCCUPATIONAL INJURIES
Total Number	48,148	Total Number	4	Fatal Injuries Total
White Number	42,380	Rate/1000 Births	Mothers <12 Years Education	Agricultural
Percent of Total	88.0	White Number	6.4	Non-agricultural
Black Number	4,595	Rate/1000 Births	Transition Rate (2003-2004)	Nonfatal Injuries - Workers Compensation Claims
Percent of Total	9.5	Black Number	5.7	Total
Other Number	1,172	Rate/1000 Births	Dropout Rate (2003-2004)	Agricultural
Percent of Total	2.4		Percent	Non-agricultural
65 & Older Number	5,959		County Rank	
Percent of Total	12.4			
Under 18 Number	10,547			
Percent of Total	22.1			
<b>TOTAL BIRTHS</b>				
All Ages Number	621			
Crude Birth Rate/1000 Pop.	12.9			
Under 18 Number	24			
Birth Rate/1000 F. Pop. 10-17	10.3			
Weight < 2500 Grams Number	55			
Percent	8.9			
Mothers who Prenatal Care 1st Trimester Number	157			
Percent	25.5			
Unmarried Births Number	282			
Rate/1000 Live Births	421.9			
<b>WHITE BIRTHS</b>				
All Ages Number	525			
Crude Birth Rate/1000 Pop.	12.4			
Under 18 Number	24			
Birth Rate/1000 F. Pop. 10-17	12.2			
Weight < 2500 Grams Number	49			
Percent	9.3			
Mothers who Prenatal Care 1st Trimester Number	128			
Percent	24.5			
Unmarried Births Number	213			
Rate/1000 Live Births	405.7			
<b>BLACK BIRTHS</b>				
All Ages Number	50			
Crude Birth Rate/1000 Pop.	10.9			
Under 18 Number	0			
Birth Rate/1000 F. Pop. 10-17	0.0			
Weight < 2500 Grams Number	2			
Percent	4.0			
Mothers who Prenatal Care 1st Trimester Number	13			
Percent	27.1			
Unmarried Births Number	36			
Rate/1000 Live Births	720.0			

440-338-5300 FAX 440-338-6000 www.ky.gov

Communicable diseases (Crude rate per 100,000 Pop.; 2007-2008)	Franklin County	State	2010 Goal KY
Gonorrhea	183.8	98.7	55.0
Chlamydia	596.8	249.0	140.0
Syphilis	2 cases *	3.9	0.27
Tuberculosis	1 case *	2.0	1.0
HIV	2 cases *	8.2	N/A
AIDS	1 case *	5.0	5.4

\*Rates are not published when the case number is less than 10. Kentucky Department for Public Health.

COMMUNITY HEALTH PROFILE

LEADING AND SELECTED CAUSES OF RESIDENT DEATHS, 2005

Cause of Death	All Ages		< 1 Yr.		1 - 14 Yrs.		15 - 24 Yrs.		25 - 34 Yrs.		35 - 44 Yrs.		45 - 54 Yrs.		55 - 64 Yrs.		65 + Yrs.		Age Adj Rate	YPLL - 75
	No.	Rate	No.	Rate	No.	Rate	No.	Rate	No.	Rate	No.	Rate	No.	Rate	No.	Rate	No.	Rate		
<b>FRANKLIN COUNTY</b>																				
<b>LEADING CAUSES - TOTAL POPULATION</b>																				
All Causes	514	1086.6	6	977.2	1	122.2	4	63.8	8	128.5	14	194.4	32	422.0	72	1216.2	377	6231.4	1051.7	3,884
Diseases of Heart	124	257.3	0	0.0	0	0.0	0	0.0	0	0.0	4	55.5	7	92.3	13	219.6	100	1652.9	257.7	605
Malignant Neoplasms	121	251.1	0	0.0	0	0.0	1	16.0	1	15.8	3	41.6	14	184.6	29	489.9	73	1208.6	233.8	1,120
Cerebrovascular Diseases	28	58.1	0	0.0	0	0.0	0	0.0	0	0.0	1	13.9	0	0.0	4	67.6	23	380.2	57.4	125
Chronic Lower Respiratory Diseases	25	51.9	0	0.0	0	0.0	0	0.0	0	0.0	0	0.0	0	0.0	4	67.6	21	347.1	50.7	95
Unintentional Injuries	21	43.6	0	0.0	0	0.0	1	16.0	1	15.8	3	41.6	2	26.4	0	0.0	14	231.4	45.8	260
Alzheimer's Disease	19	39.4	0	0.0	0	0.0	0	0.0	0	0.0	0	0.0	0	0.0	0	0.0	19	314.0	42.1	0
Nephritis, Nephrotic Syndrome and Nephrosis	17	35.3	0	0.0	0	0.0	0	0.0	0	0.0	0	0.0	3	39.6	2	33.8	0	198.3	34.8	110
Diabetes Mellitus	15	31.1	0	0.0	0	0.0	0	0.0	0	0.0	0	0.0	0	0.0	0	0.0	15	247.9	32.0	20
Influenza and Pneumonia	14	22.8	0	0.0	0	0.0	0	0.0	0	0.0	0	0.0	0	0.0	1	16.9	10	165.3	22.9	35
Chronic Liver Disease and Cirrhosis	8	16.6	0	0.0	0	0.0	0	0.0	0	0.0	0	0.0	0	0.0	5	84.5	3	49.6	13.5	85
<b>SELECTED CAUSES - TOTAL POPULATION</b>																				
Lung Cancer	41	85.1	0	0.0	0	0.0	0	0.0	0	0.0	0	0.0	5	65.9	13	219.6	23	380.2	76.4	370
Female Breast Cancer	10	40.3	0	0.0	0	0.0	0	0.0	0	0.0	2	55.8	2	50.7	1	32.0	5	140.6	37.0	155
Chronic Liver Disease and Cirrhosis	8	16.6	0	0.0	0	0.0	0	0.0	0	0.0	0	0.0	0	0.0	5	84.5	3	49.6	13.5	85
Motor Vehicle Crashes	5	10.4	0	0.0	0	0.0	0	0.0	0	0.0	1	13.9	2	26.4	0	0.0	2	33.1	10.4	85
Assault (Homicide)	1	2.1	0	0.0	1	122.2	0	0.0	0	0.0	0	0.0	0	0.0	0	0.0	0	0.0	2.3	72
Congenital Malformations, Deformations, etc.	1	2.1	0	0.0	0	0.0	0	0.0	0	0.0	0	0.0	0	0.0	1	16.9	0	0.0	1.5	15
Drug-induced	1	2.1	0	0.0	0	0.0	1	16.0	0	0.0	0	0.0	0	0.0	0	0.0	0	0.0	2.2	65
<b>LEADING CAUSES - WHITE</b>																				
All Causes	489	1153.6	5	991.5	1	14.2	4	85.1	7	128.7	13	201.3	30	432.8	67	1200.5	362	6320.9	1071.0	3,880
Diseases of Heart	118	278.4	0	0.0	0	0.0	0	0.0	0	0.0	4	61.9	7	101.0	12	215.0	96	1658.8	261.2	580
Malignant Neoplasms	117	276.0	0	0.0	0	0.0	1	21.3	1	18.4	3	46.5	13	187.6	28	501.7	71	1239.7	241.6	1,075
Cerebrovascular Diseases	27	63.7	0	0.0	0	0.0	0	0.0	0	0.0	1	15.5	0	0.0	4	71.7	22	384.1	68.4	125
Chronic Lower Respiratory Diseases	24	56.6	0	0.0	0	0.0	0	0.0	0	0.0	0	0.0	2	28.9	4	71.7	20	349.2	51.1	95
Unintentional Injuries	21	49.5	0	0.0	0	0.0	1	21.3	1	18.4	3	46.5	2	28.9	0	0.0	14	244.5	50.0	260
Alzheimer's Disease	18	42.5	0	0.0	0	0.0	0	0.0	0	0.0	0	0.0	0	0.0	0	0.0	18	314.3	42.3	0
Nephritis, Nephrotic Syndrome and Nephrosis	17	40.1	0	0.0	0	0.0	0	0.0	0	0.0	0	0.0	3	43.3	2	35.8	12	209.5	37.1	110
Diabetes Mellitus	14	33.0	0	0.0	0	0.0	0	0.0	0	0.0	0	0.0	0	0.0	0	0.0	14	244.5	31.5	20
Influenza and Pneumonia	11	25.9	0	0.0	0	0.0	0	0.0	0	0.0	0	0.0	0	0.0	1	17.9	10	174.6	24.2	35
Chronic Liver Disease and Cirrhosis	7	16.5	0	0.0	0	0.0	0	0.0	0	0.0	0	0.0	0	0.0	4	71.7	3	52.4	12.8	70
<b>LEADING CAUSES - BLACK</b>																				
All Causes	23	602.7	1	1612.9	0	0.0	0	0.0	1	165.3	1	173.6	2	361.7	5	2016.1	13	5000.0	927.9	305
Diseases of Heart	6	131.1	0	0.0	0	0.0	0	0.0	0	0.0	0	0.0	0	0.0	1	403.2	5	1923.1	269.2	25
Malignant Neoplasms	3	65.6	0	0.0	0	0.0	0	0.0	0	0.0	0	0.0	1	180.8	1	403.2	1	384.6	103.9	45
Cerebrovascular Diseases	1	21.9	0	0.0	0	0.0	0	0.0	0	0.0	0	0.0	0	0.0	0	0.0	1	384.6	41.9	0
Certain Conditions Originating in the Perinatal Period	1	21.9	1	1612.9	0	0.0	0	0.0	0	0.0	0	0.0	0	0.0	0	0.0	0	0.0	22.3	75
Chronic Liver Disease and Cirrhosis	1	21.9	0	0.0	0	0.0	0	0.0	0	0.0	0	0.0	0	0.0	1	403.2	0	0.0	35.2	15
Chronic Lower Respiratory Diseases	1	21.9	0	0.0	0	0.0	0	0.0	0	0.0	0	0.0	0	0.0	0	0.0	1	384.6	41.9	0
Diabetes Mellitus	1	21.9	0	0.0	0	0.0	0	0.0	0	0.0	0	0.0	0	0.0	0	0.0	0	0.0	60.6	0
Hypertension and Hypertensive Renal Disease	1	21.9	0	0.0	0	0.0	0	0.0	0	0.0	0	0.0	0	0.0	1	403.2	0	0.0	35.2	15
Human Immunodeficiency Virus (HIV) Disease	1	21.9	0	0.0	0	0.0	0	0.0	0	0.0	0	0.0	1	180.8	0	0.0	0	0.0	24.4	25
Sepsicemia	1	21.9	0	0.0	0	0.0	0	0.0	0	0.0	0	0.0	0	0.0	0	0.0	1	384.6	44.3	5

2007/2008 COMMUNITY HEALTH PROFILE LEADING AND SELECTED CAUSES OF RESIDENT DEATHS, 2005



# Public Health

Prevent. Promote. Protect.

## FRANKLIN COUNTY HEALTH DEPARTMENT

100 Glenn's Creek Road  
Frankfort, KY 40601  
Business Office  
Phone: 502-564-4269  
Clinic Services  
Phone: 502-564-7647

Franklin County Home Health Agency  
231 East Main Street  
Frankfort, KY 40601  
Phone: 502-564-7383

Public Health Center  
851 East-West Connector  
Frankfort, KY 40601  
Environmental Health Services  
502-564-7382  
Community Health Education  
502-564-5559  
Emergency Preparedness  
502-564-9336

Website: [WWW.FCHD.ORG](http://WWW.FCHD.ORG)